

Data Sheet | Item Number: 2091-1102

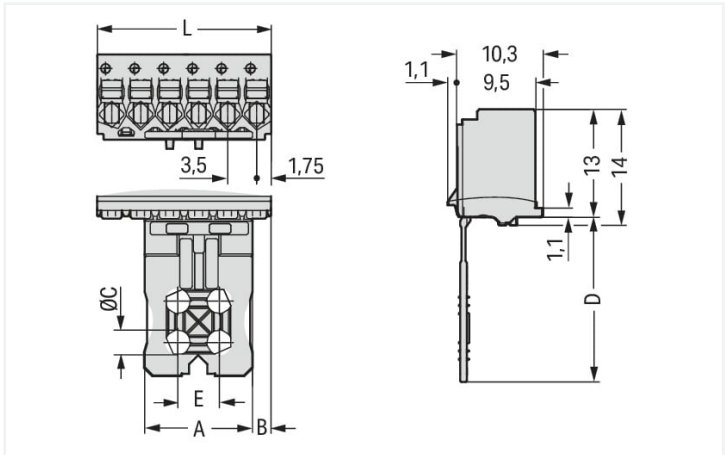
1-conductor female connector; push-button; Push-in CAGE CLAMP®; 1.5 mm²; Pin spacing 3.5 mm; 2-pole; Gripping plate; 1,50 mm²; light gray

<https://www.wago.com/2091-1102>



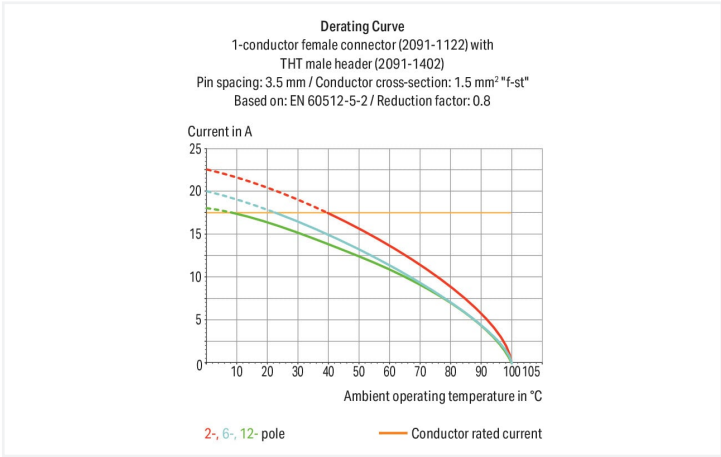
Color: light gray

Similar to illustration



Dimensions in mm

$L = (\text{pole no.} - 1) \times \text{pin spacing}$



- Universal connection for all conductor types
- Simple, push-in termination of solid and ferruled conductors
- Easy-to-use design does not require specialty tools
- Ability to wire while mated or unmated
- Test port parallel to conductor entry – touch contact
- Integrated locking latches prevent accidental disconnection

Notes	
Safety information 1	The picoMAX® Pluggable Connection System includes connectors without breaking capacity in accordance with DIN EN 61984. When used as intended, these connectors must not be connected/disconnected when live or under load. The circuit design should ensure header pins, which can be touched, are not live when unmated.
Variants:	Direct marking Other versions (or variants) can be requested from WAGO Sales or configured at https://configurator.wago.com/ .



Electrical data			
Ratings per IEC/EN		Ratings per UL 1059	
Ratings per	IEC/EN 60664-1	Approvals per	UL 1059
Nominal voltage (III/3)	160 V	Rated voltage UL (Use Group B)	300 V
Rated impulse voltage (III/3)	2.5 kV	Rated current UL (Use Group B)	10 A
Rated voltage (III/2)	160 V	Rated voltage UL (Use Group D)	300 V
Rated impulse voltage (III/2)	2.5 kV	Rated current UL (Use Group D)	10 A
Nominal voltage (II/2)	320 V		
Rated surge voltage (II/2)	2.5 kV		
Rated current	10 A		
Legend (ratings)	(III / 2) ≙ Overvoltage category III / Pollution degree 2		

Connection data			
Connection points	2	Connection 1	
Total number of potentials	2	Connection technology	Push-in CAGE CLAMP®
Number of connection types	1	Actuation type	Push-button
Number of levels	1	Solid conductor	0.2 ... 1.5 mm² / 24 ... 14 AWG
		Fine-stranded conductor	0.2 ... 1.5 mm² / 24 ... 14 AWG
		Fine-stranded conductor; with insulated ferrule	0.25 ... 0.75 mm²
		Fine-stranded conductor; with uninsulated ferrule	0.25 ... 1.5 mm²
		Strip length	8 ... 9 mm / 0.31 ... 0.35 inches
		Pole number	2

Physical data		
Pin spacing	3.5 mm / 0.138 inches	
Width	7 mm / 0.276 inches	
Height	30 mm / 1.181 inches	
Depth	11.4 mm / 0.449 inches	

Mechanical Data		
Variable coding	Yes	
Design	with gripping plate	
Anti-rotation protection	Yes	

Plug-in connection		
Contact type (pluggable connector)	Female connector/socket	
Connector (connection type)	for conductor	
Mismating protection	No	
Plugging without loss of pin spacing	Yes	



Material Data		
Note (material data)		Information on material specifications can be found here
Color	light gray	
Material group	I	
Insulation material	Polyphthalamide (PPA GF)	
Flammability class per UL94	V0	
Clamping spring material	Chrome-nickel spring steel (CrNi)	
Contact material	Electrolytic copper (E _{cu})	
Contact plating	Tin	
Fire load	0.005 MJ	
Weight	0.9 g	

Environmental requirements		
Limit temperature range	-60 ... +100 °C	
Processing temperature	-35 ... +60 °C	

Commercial data		
Product Group	26 (picoMAX Connectors)	
eCl@ss 10.0	27-14-11-06	
eCl@ss 9.0	27-14-11-06	
ETIM 8.0	EC001284	
ETIM 7.0	EC001284	
PU (SPU)	100 pcs	
Packaging type	Box	
Country of origin	DE	
GTIN	4050821160670	
Customs tariff number	85366990990	

Approvals / Certificates

General approvals



Approval	Standard	Certificate Name
CB DEKRA Certification B.V.	IEC 61984	NL-49736/A1
CSA DEKRA Certification B.V.	C22.2	2362521
CSA DEKRA Certification B.V.	C22.2 No. 158	2362521
KEMA/KEUR DEKRA Certification B.V.	EN 61984	71-102260 REV.1
UL Underwriters Laboratories Inc.	UL 1977	E45171
UR Underwriters Laboratories Inc.	UL 1059	E45172



Downloads

Environmental Product Compliance

Compliance Search

Environmental Product Compliance 2091-1102

↓

Documentation

Additional Information

Technical Section

03.04.2019

pdf

1949.09 KB

↓

CAD/CAE-Data

CAD data

2D/3D Models 2091-1102

↓

CAE data

ZUKEN Portal 2091-1102

↓

1 Compatible Products

1.1 System counterpart

1.1.1 Male connector/plug



[Item No.: 2091-1522/002-000](#)
1-conductor male connector; Push-in CA-GE CLAMP®; 1.5 mm²; Pin spacing 3.5 mm; 2-pole; Integrated release lever; 1,50 mm²; light gray



[Item No.: 2091-1422](#)
THT male header; 1.0 mm Ø solder pin; angled; Pin spacing 3.5 mm; 2-pole; light gray



[Item No.: 2091-1402](#)
THT male header; 1.0 mm Ø solder pin; straight; Pin spacing 3.5 mm; 2-pole; light gray

1.2 Optional Accessories

1.2.1 Coding

1.2.1.1 Coding



[Item No.: 2091-1610](#)
Coding key carrier; suitable for 3.5 mm pin spacing; orange

1.2.2 Test and measurement

1.2.2.1 Testing accessories



Item No.: 735-500

WAGO Test pin; 1 mm Ø; 30 V AC / 60 V DC; CAT0; 1 A; 6 mm uninsulated; Test lead for soldering up to 0,5mm²

1.2.3 Tool

1.2.3.1 Operating tool

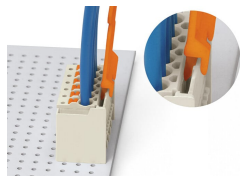


Item No.: 210-719

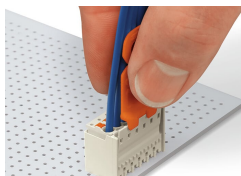
Operating tool; Blade: 2.5 x 0.4 mm; with a partially insulated shaft

Installation Notes

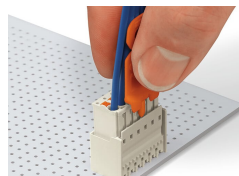
Locking system



Disconnecting a female connector via unlocking tool. Plug unlocking tool into the male header's locking latch.

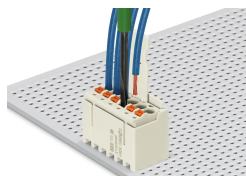


Insert unlocking tool until it hits the back-stop. Wedge opens locking latches.



Pull on both unlocking tool and conductors to remove female connector from male header.

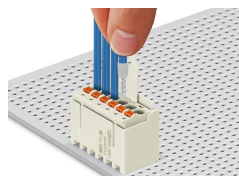
Conductor termination



Inserting fine-stranded conductor into mated female connector via push-button.



Inserting a fine-stranded conductor into an unmated female connector via push-button.



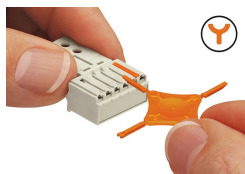
Inserting solid and ferruled conductors via push-in termination.

Marking



Pole marking via factory direct marking.

Coding



Coding a female connector (via coding key carrier and two keys for female connector, see symbol).

Testing



Testing via 1 mm Ø test pin – touch contact.