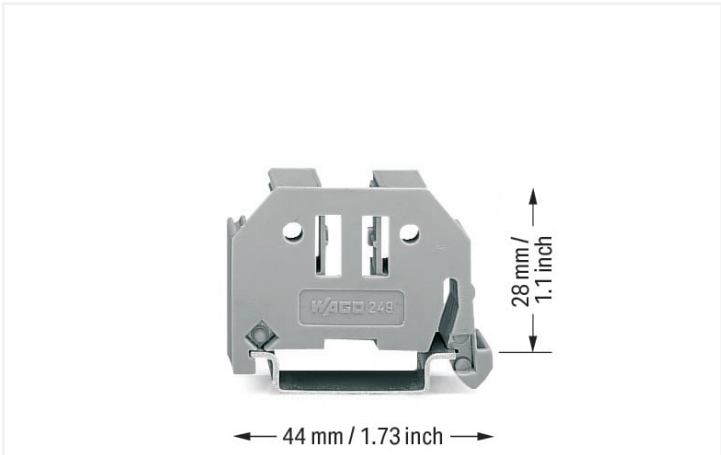
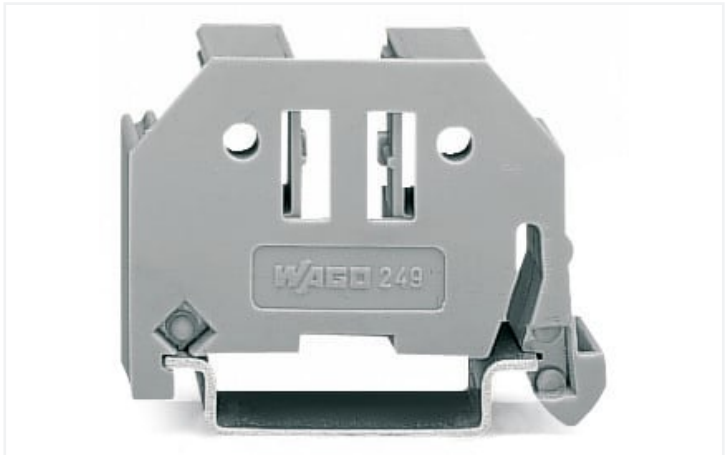




<https://www.wago.com/249-117>



Color:  gray



Notes	
Note	<p>Snap on – that's it! Assembling the new WAGO screwless end stop is as simple and quick as snapping a WAGO rail-mount terminal block onto the rail.</p> <p>Tool free! A tool-free design allows rail-mount terminal blocks to be safely and economically secured against any movement on all DIN-35 rails per DIN EN 60715 (35 x 7.5 mm; 35 x 15 mm).</p> <p>Entirely without screws! The "secret" to a perfect fit lies in the two small clamping plates which keep the end stop in position, even if the rails are mounted vertically.</p> <p>Simply snap on – that's it! In addition, costs are significantly reduced when using large numbers of end stops. Additional benefit: Three marker slots for all WAGO rail-mount terminal block markers and one snap-in hole for WAGO adjustable height group marker carriers offer individual marking options.</p>

Technical data	
Main product function	Mounting accessories
Mounting type	DIN-35 rail

Physical data	
Width	10 mm / 0.394 inches
Height	44 mm / 1.732 inches
Depth	35 mm / 1.378 inches
Depth from upper-edge of DIN-rail	28 mm / 1.102 inches




Material Data	
Color	gray
Insulation material	Polyamide (PA66)
Flammability class per UL94	V0
Fire load	0.153 MJ
Weight	5.1 g



Commercial data	
Product Group	2 (Terminal Block Accessories)
eCl@ss 10.0	27-14-11-35
eCl@ss 9.0	27-14-11-35
ETIM 8.0	EC001041
ETIM 7.0	EC001041
PU (SPU)	50 (25) pcs
Packaging type	Box
Country of origin	CN
GTIN	4055143314169
Customs tariff number	39269097900

Downloads	
Environmental Product Compliance	
Compliance Search	
Environmental Product Compliance 249-117	

Documentation				
Bid Text				
249-117	19.02.2019	xml 2.66 KB		
249-117	31.08.2017	doc 23.50 KB		

CAD/CAE-Data		
CAD data		CAE data
2D/3D Models 249-117		EPLAN Data Portal 249-117 
		WSCAD Universe 249-117 
		ZUKEN Portal 249-117 