

# Bus system flush-type socket - VS-FSBPXS-OE-94F/5,0



1424164

<https://www.phoenixcontact.com/us/products/1424164>

Please be informed that the data shown in this PDF document is generated from our Online Catalog. Please find the complete data in the user documentation. Our General Terms of Use for Downloads are valid.



Bus system flush-type socket, Ethernet CAT6<sub>A</sub> (10 Gbps) CAT6<sub>A</sub>, 8-position, PUR, water blue RAL 5021, shielded, Flush-type female connector, straight, M12-SPEEDCON, X-coded, on free cable end, Cable connection, cable length: 5 m, Ethernet 10 Gbit, Alternative product in accordance with RoHS II without Exemption 6c (Pb <0.1%) 1239449

## Your advantages

- Pre-assembled with cables in various standard lengths for immediate use
- Customer-specific assemblies and cable lengths can be supplied
- Sealed on the cable side for optimum tightness of seal
- Cable designs for all common networks and fieldbuses
- For high transmission safety: shield connection to the housing with optional EMC nut

## Commercial Data

Item number	1424164
Packing unit	1 pc
Minimum order quantity	1 pc
Note	Made to Order (non-returnable)
Sales Key	A11
Product Key	ABQCED
Catalog Page	Page 403 (C-2-2019)
GTIN	4046356692649
Weight per Piece (including packing)	270.1 g
Weight per Piece (excluding packing)	249.1 g
Customs tariff number	85444290
Country of origin	DE

# Bus system flush-type socket - VS-FSBPXS-OE-94F/5,0



1424164

<https://www.phoenixcontact.com/us/products/1424164>

## Technical Data

### Notes

#### Notes on operation

The electrical and mechanical data specified assume that the connector pair is correctly locked and mounted. If the connector is unlocked and if there is a danger of contamination, the connector must be sealed using a protective cap > IP54. Influences arising from litz wires, cables or PCB assembly must also be taken into consideration.

#### Safety note

##### Safety note

**WARNING:** The connectors may not be plugged in or disconnected under load. Ignoring the warning or improper use may damage persons and/or property.

- **WARNING:** Commission properly functioning products only. The products must be regularly inspected for damage. Decommission defective products immediately. Replace damaged products. Repairs are not possible.

- **WARNING:** Only electrically qualified personnel may install and operate the product. They must observe the following safety notes. The qualified personnel must be familiar with the basics of electrical engineering. They must be able to recognize and prevent danger. The relevant symbol on the packaging indicates that only personnel familiar with electrical engineering are allowed to install and operate the product.

- The products are suitable for applications in plant, controller, and electrical device engineering.

- When operating the connectors in outdoor applications, they must be separately protected against environmental influences.

- Assembled products may not be manipulated or improperly opened.

- Only use mating connectors that are specified in the technical data of the standards listed (e.g. the ones listed in the product accessories online at [phoenixcontact.com/products](https://www.phoenixcontact.com/products)).

- When using the product in direct connection with third-party manufacturers, the user is responsible.

- For operating voltages > 50 V AC, conductive connector housings must be grounded

- Ensure that when laying the cable, the tensile load on the connectors does not exceed the upper limit specified in the standards.

- Observe the corresponding technical data. You will find information:

- o On the product
- o On the packing label
- o In the supplied documentation
- o Online at [phoenixcontact.com/products](https://www.phoenixcontact.com/products) under the product

- Only use tools recommended by Phoenix Contact

- Use a protective cap to protect connectors that are not in use. The suitable accessories are available online in the accessory section of the product at [phoenixcontact.com/products](https://www.phoenixcontact.com/products)

- Ensure that the protective or functional ground has been properly connected.

# Bus system flush-type socket - VS-FSBPXS-OE-94F/5,0



1424164

<https://www.phoenixcontact.com/us/products/1424164>

- VDE 0100/1.97 § 411.1.3.2 and DIN EN 60 204/11.98 § 14.1.3 are applicable when combining several circuits in a cable and/or connector
- The connector warms up in normal operation. Depending on the ambient conditions, the surface of the connector can continue to warm up. In this case, the user is responsible for posting warnings (e.g. DIN EN ISO 13732-1:2008-12).

## Product properties

Product type	Data cable preassembled
Number of positions	8
Application	Railway applications
No. of cable outlets	1
Shielded	yes
Coding	X - data

## Insulation characteristics

Overvoltage category	III
Degree of pollution	3

## Interfaces

Bus system	Ethernet
Signal type/category	Ethernet CAT6 <sub>A</sub> , 10 Gbps
	Ethernet CAT6 <sub>A</sub> , 10 Gbps

## Electrical properties

Rated surge voltage	0.8 kV
Contact resistance	≤ 3 mΩ
Insulation resistance	≥ 100 MΩ
Nominal voltage U <sub>N</sub>	50 V AC
	60 V DC
Nominal current I <sub>N</sub>	0.5 A (Plug/socket in accordance with IEC 61076-2-101, cable technical data is to be observed)
Transmission medium	Copper

## Material specifications

Flammability rating according to UL 94	V0
Sealing material	FKM
Contact material	CuZn
Contact surface material	Au
Contact carrier material	PPA
Cable gland material	Zinc die-cast, nickel-plated

## Connection data

### Connection technology

Connection method	Cable connection
-------------------	------------------

# Bus system flush-type socket - VS-FSBPXS-OE-94F/5,0



1424164

<https://www.phoenixcontact.com/us/products/1424164>

## Conductor connection

Type of contact	Crimp contacts
Connection method	Cable connection

## Connector

Insertion/withdrawal cycles	≥ 100
-----------------------------	-------

### Connection 1

Head design	Flush-type female connector
Head cable outlet	straight
Head thread type	M12
Head locking type	SPEEDCON
Coding	X-coded

### Connection 2

Head design	free cable end
-------------	----------------

## Cable / line

Cable length	5 m
Cable weight	42 kg/km
UL AWM Style	20963 (80°C/30 V)
Number of positions	8
Shielded	yes
Cable type	Ethernet 10 Gbit [94F]
Signal runtime	5.13 ns/m
Conductor structure signal line	7x 0.16 mm
AWG signal line	26
Conductor cross section	4x 2x 0.14 mm <sup>2</sup>
Wire diameter incl. insulation	1.04 mm
External cable diameter	6.4 mm ±0.2 mm
Outer sheath, material	PUR
External sheath, color	water blue RAL 5021
Conductor material	Bare Cu litz wires
Material wire insulation	Foamed PE
Single wire, color	white/blue-blue, white/orange-orange, white/green-green, white/brown-brown
Thickness, outer sheath	0.65 mm
Twisted pairs	2 cores to the pair
Type of pair shielding	Aluminum-lined foil
Overall twist	4 pairs for core
Optical shield covering	70 %
Insulation resistance	≥ 500 MΩ*km
Loop resistance	≤ 290.00 Ω/km
Wave impedance	100 Ω ±5 Ω (at 100 MHz)
Cable capacity	47 nF/km

# Bus system flush-type socket - VS-FSBPXS-OE-94F/5,0



1424164

<https://www.phoenixcontact.com/us/products/1424164>

Nominal voltage, cable	≤ 100 V
Test voltage Core/Core	700 V (50 Hz, 1 min.)
Test voltage Core/Shield	700 V (50 Hz, 1 min.)
Minimum bending radius, fixed installation	4 x D
Minimum bending radius, flexible installation	8 x D
Tensile strength	≤ 100 N
Near end crosstalk attenuation (NEXT)	75.3 dB (with 1 MHz)
	66.3 dB (at 4 MHz)
	61.8 dB (at 8 MHz)
	60.3 dB (at 10 MHz)
	57.2 dB (at 16 MHz)
	55.8 dB (at 20 MHz)
	54.3 dB (at 25 MHz)
	52.8 dB (at 31.25 MHz)
	48.4 dB (at 62.5 MHz)
	45.3 dB (at 100 MHz)
	40.8 dB (at 200 MHz)
	39.3 dB (at 250 MHz)
	38.1 dB (at 300 MHz)
	36.3 dB (at 400 MHz)
	34.8 dB (at 500 MHz)
Power-summated near end crosstalk attenuation (PSNEXT)	72.3 dB (with 1 MHz)
	63.3 dB (at 4 MHz)
	58.8 dB (at 8 MHz)
	57.3 dB (at 10 MHz)
	54.2 dB (at 16 MHz)
	52.8 dB (at 20 MHz)
	51.3 dB (at 25 MHz)
	49.9 dB (at 31.25 MHz)
	45.4 dB (at 62.5 MHz)
	42.3 dB (at 100 MHz)
	37.8 dB (at 200 MHz)
	36.3 dB (at 250 MHz)
	35.1 dB (at 300 MHz)
	33.3 dB (at 400 MHz)
	31.8 dB (at 500 MHz)
Return loss (RL)	20 dB (with 1 MHz)
	23 dB (at 4 MHz)
	24.5 dB (at 8 MHz)
	25 dB (at 10 MHz)
	25 dB (at 16 MHz)
	25 dB (at 20 MHz)
	24.2 dB (at 25 MHz)
	23.3 dB (at 31.25 MHz)

# Bus system flush-type socket - VS-FSBPXS-OE-94F/5,0



1424164

<https://www.phoenixcontact.com/us/products/1424164>

	20.7 dB (at 62.5 MHz)
	19 dB (at 100 MHz)
	16.4 dB (at 200 MHz)
	15.6 dB (at 250 MHz)
	15.6 dB (at 300 MHz)
	15.6 dB (at 400 MHz)
	15.6 dB (at 500 MHz)
Shield attenuation	3.1 dB (with 1 MHz)
	5.7 dB (at 4 MHz)
	8 dB (at 8 MHz)
	8.9 dB (at 10 MHz)
	11.2 dB (at 16 MHz)
	12.6 dB (at 20 MHz)
	14.1 dB (at 25 MHz)
	15.8 dB (at 31.25 MHz)
	22.5 dB (at 62.5 MHz)
	28.7 dB (at 100 MHz)
	41.4 dB (at 200 MHz)
	46.6 dB (at 250 MHz)
	51.4 dB (at 300 MHz)
	60.1 dB (at 400 MHz)
	67.9 dB (at 500 MHz)
	≥ 80 dB (at 30 ... 100 MHz)
Halogen-free	according to IEC 60754-1
Flame resistance	according to IEC 60332-1-2
Resistance to oil	in accordance with DIN EN 60811-2-1
Ambient temperature (operation)	-40 °C ... 80 °C (cable, fixed installation)
	-20 °C ... 80 °C (Cable, flexible installation)
Ambient temperature (installation)	-20 °C ... 80 °C
Cable type	Ethernet 10 Gbit
Signal type/category	Ethernet CAT6 <sub>A</sub> , 10 Gbps
Outer sheath, material	PUR
External sheath, color	water blue RAL 5021

## Ambient conditions

Degree of protection	IP65
	IP67
Degree of protection	IP65/IP67
Ambient temperature (operation)	-25 °C ... 85 °C (Plug / socket)
	-40 °C ... 85 °C (without mechanical actuation)

## Standards and regulations

M12

Standards/specifications	IEC 61076-2-109
--------------------------	-----------------

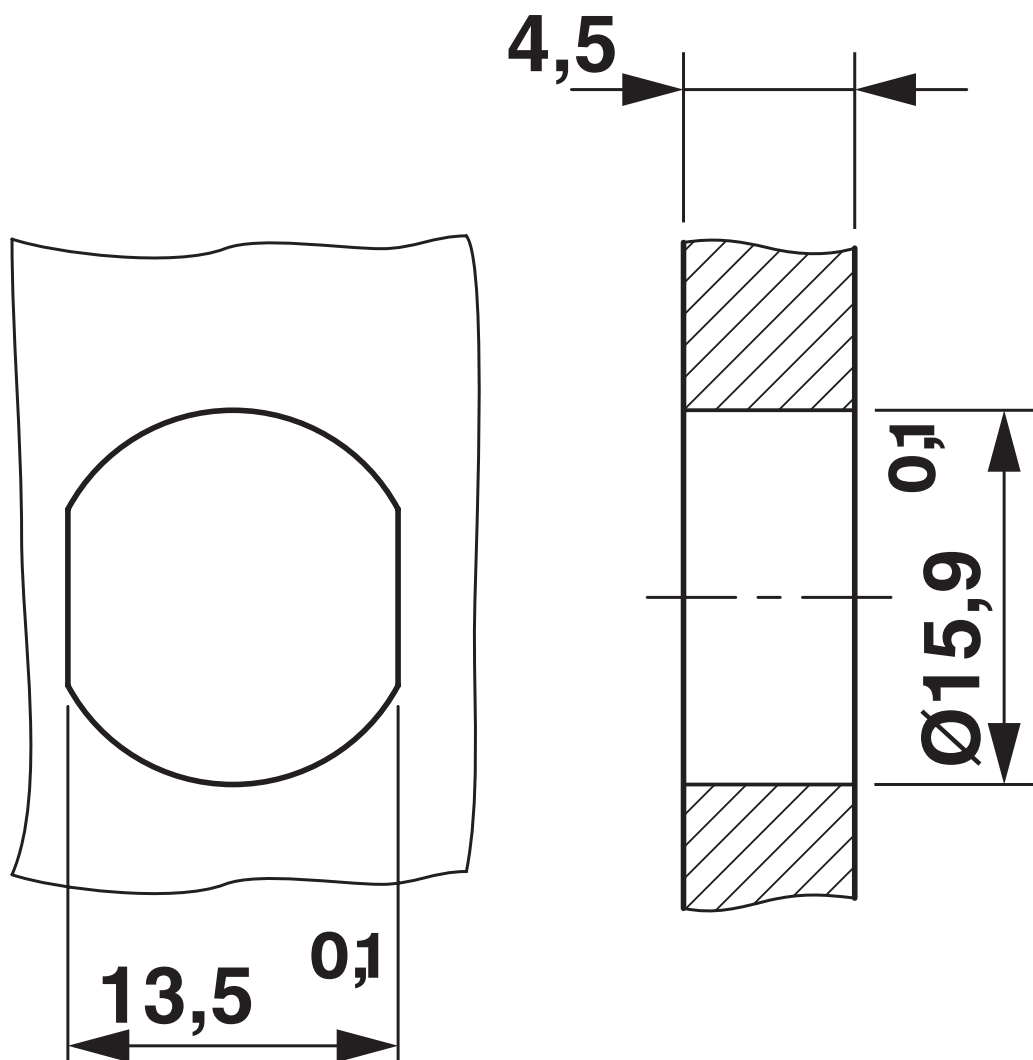
# Bus system flush-type socket - VS-FSBPXS-OE-94F/5,0

1424164

<https://www.phoenixcontact.com/us/products/1424164>

## Drawings

Dimensional drawing

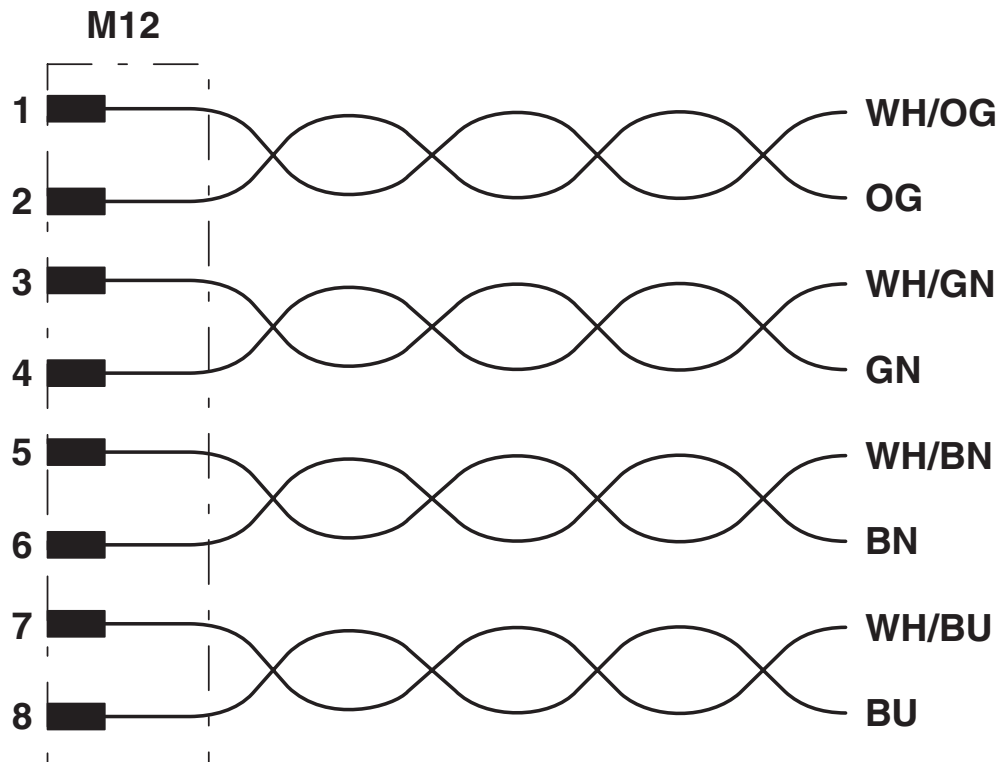


# Bus system flush-type socket - VS-FSBPXS-OE-94F/5,0

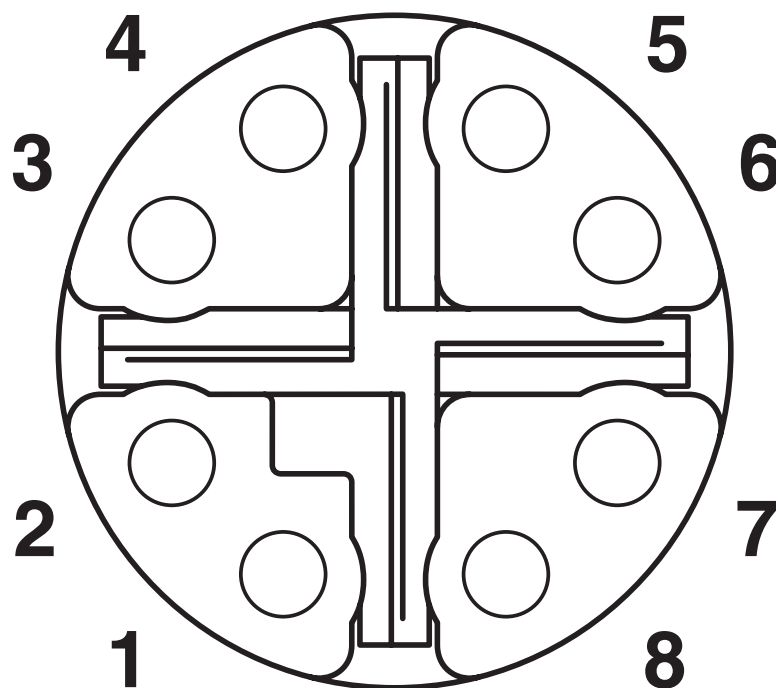
1424164

<https://www.phoenixcontact.com/us/products/1424164>

Circuit diagram



Schematic diagram



M12 socket pin assignment, 8-pos, view of socket side



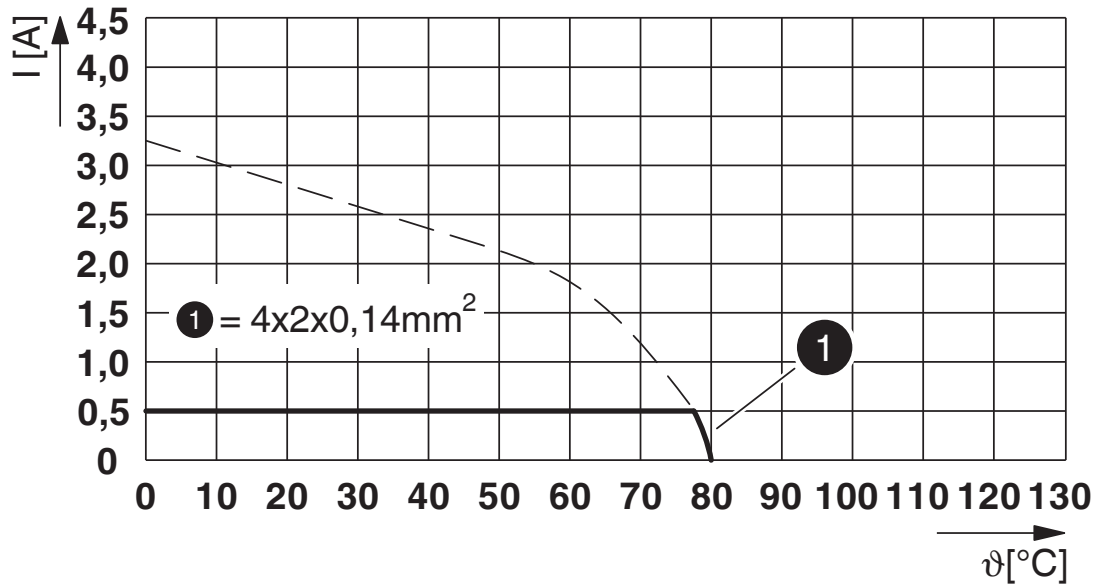
# Bus system flush-type socket - VS-FSBPXS-OE-94F/5,0



1424164

<https://www.phoenixcontact.com/us/products/1424164>

Diagram



$I$  = current strength,  $T$  = ambient temperature


# Bus system flush-type socket - VS-FSBPXS-OE-94F/5,0





1424164

<https://www.phoenixcontact.com/us/products/1424164>

## Approvals

 <b>cUL Recognized</b> Approval ID: E335024-20120308				
	Nominal Voltage $U_N$	Nominal Current $I_N$	Cross Section AWG	Cross Section $\text{mm}^2$
	60 V	0.5 A	-	-

 <b>UL Recognized</b> Approval ID: E335024-20120308				
	Nominal Voltage $U_N$	Nominal Current $I_N$	Cross Section AWG	Cross Section $\text{mm}^2$
	60 V	0.5 A	-	-

 <b>EAC</b> Approval ID: 19060508				
---	--	--	--	--

<b>cULus Recognized</b>				
-------------------------	--	--	--	--

# Bus system flush-type socket - VS-FSBPXS-OE-94F/5,0



1424164

<https://www.phoenixcontact.com/us/products/1424164>

## Classifications

### ECLASS

ECLASS-9.0	27060308
ECLASS-10.0.1	27060308
ECLASS-11.0	27440103

### ETIM

ETIM 8.0	EC003570
----------	----------

### UNSPSC

UNSPSC 21.0	39121400
-------------	----------

# Bus system flush-type socket - VS-FSBPXS-OE-94F/5,0



1424164  
<https://www.phoenixcontact.com/us/products/1424164>

## Environmental Product Compliance

REACH SVHC	Lead 7439-92-1
China RoHS	Environmentally Friendly Use Period = 50 years
	For information on hazardous substances, refer to the manufacturer's declaration available under "Downloads"

# Bus system flush-type socket - VS-FSBPXS-OE-94F/5,0



1424164

<https://www.phoenixcontact.com/us/products/1424164>

## Accessories

### Screw plug

Screw plug - PROT-M12 - 1680539

<https://www.phoenixcontact.com/us/products/1680539>



An M12 screw plug for the unoccupied M12 sockets of the sensor/actuator cable, boxes and flush-type connectors

---

### Screw plug

Screw plug - PROT-M12 SH - 1503302

<https://www.phoenixcontact.com/us/products/1503302>



An M12 screw plug for the unoccupied M12 sockets of the shielded sensor/actuator cable, boxes and flush-type connectors

# Bus system flush-type socket - VS-FSBPXS-OE-94F/5,0



1424164

<https://www.phoenixcontact.com/us/products/1424164>

## Sealing cap

Sealing cap - PROT-M12 MS-M - 1414148

<https://www.phoenixcontact.com/us/products/1414148>



An M12 screw plug for the unoccupied M12 sockets of the shielded sensor/actuator cable, boxes and flush-type connectors

---

## Screw plug

Screw plug - PROT-M12 FB - 1555538

<https://www.phoenixcontact.com/us/products/1555538>



M12 high-grade steel screw plug, for unoccupied M12 sockets of the sensor/actuator cables, boxes and flush-type connectors for the food industry

# Bus system flush-type socket - VS-FSBPXS-OE-94F/5,0



1424164

<https://www.phoenixcontact.com/us/products/1424164>

## Screw plug

Screw plug - PROT-M12 MS-PA-CHAIN - 1430899

<https://www.phoenixcontact.com/us/products/1430899>

M12 sealing cap with fixing band, for sensor cables, for free M12 sockets



---

## Cable-cutting tool

Cable-cutting tool - CUTFOX 12 - 1212128

<https://www.phoenixcontact.com/us/products/1212128>



**Cable cutter**, for copper and aluminum up to 12 mm diameter (up to 35 mm<sup>2</sup>)

# Bus system flush-type socket - VS-FSBPXS-OE-94F/5,0



1424164

<https://www.phoenixcontact.com/us/products/1424164>

## Diagonal cutter

Diagonal cutter - CUTFOX-S VDE - 1212207

<https://www.phoenixcontact.com/us/products/1212207>



Diagonal cutter for hard (piano wire) and soft wires, VDE 1000 V AC/1500 V DC tested

---

## Stripping tool

Stripping tool - VS-CABLE-STRIP-VARIO - 1657407

<https://www.phoenixcontact.com/us/products/1657407>



Stripping tool, for the multi-level stripping of shielded cables



# Bus system flush-type socket - VS-FSBPXS-OE-94F/5,0



1424164

<https://www.phoenixcontact.com/us/products/1424164>

## Diagonal cutter

Diagonal cutter - MICROFOX-SP-1 - 1212487

<https://www.phoenixcontact.com/us/products/1212487>



Electronic diagonal cutter, tapered head, without chamfer, with opening spring, non-reflective phosphate-treated surface, punched version

---

## Stripping tool

Stripping tool - WIREFOX 4 - 1212156

<https://www.phoenixcontact.com/us/products/1212156>



Stripping tool, for cables and conductors (especially for rubber and silicone insulations) from 0.1 - 4 mm<sup>2</sup>, self-adjusting, stripping length of up to 18 mm, cutting capacity of up to 10 mm<sup>2</sup> stranded/1.5 mm<sup>2</sup> solid, replaceable stripping blade

# Bus system flush-type socket - VS-FSBPXS-OE-94F/5,0



1424164

<https://www.phoenixcontact.com/us/products/1424164>

## Stripping tool

Stripping tool - WIREFOX-E 4 - 1212704

<https://www.phoenixcontact.com/us/products/1212704>



Stripping tool, for cables and conductors (especially for rubber and silicone insulations) from 0.1 - 4 mm<sup>2</sup>, self-adjusting, stripping length of up to 18 mm, cutting capacity of up to 10 mm<sup>2</sup> stranded/1.5 mm<sup>2</sup> solid, replaceable stripping blade

---

## Stripping tool

Stripping tool - WIREFOX 10 - 1212150

<https://www.phoenixcontact.com/us/products/1212150>



Stripping tool, for cables and conductors from 0.02 - 10 mm<sup>2</sup>, self-adjusting, stripping length of up to 18 mm, cutting capacity of up to 10 mm<sup>2</sup> stranded/1.5 mm<sup>2</sup> solid, replaceable stripping blade

# Bus system flush-type socket - VS-FSBPXS-OE-94F/5,0



1424164

<https://www.phoenixcontact.com/us/products/1424164>

## Protective hose adapter

Protective hose adapter - WP-CTA POM 13,0 BK - 1422884

<https://www.phoenixcontact.com/us/products/1422884>



Protective hose adapter, for corrugated hoses with a nominal size of 13 (10 x 13), corrugated in parallel

---

## Protective hose

Protective hose - WP-PA HF 13,0 BK - 3240681

<https://www.phoenixcontact.com/us/products/3240681>



Protective hose, material: PA 6, filament: without, UV-resistant: yes, flexible, degree of protection: IP68, color: black, inflammability class in acc. with UL 94: V0, inner diameter: 10 mm, Total length: 50 m

# Bus system flush-type socket - VS-FSBPXS-OE-94F/5,0



1424164

<https://www.phoenixcontact.com/us/products/1424164>

## Protective hose

Protective hose - WP-PA HF-HB 13,0 BK - 3240839

<https://www.phoenixcontact.com/us/products/3240839>



Protective hose, material: PA 6, filament: without, UV-resistant: yes, flexible, degree of protection: IP68, color: black, inflammability class in acc. with UL 94: HB, inner diameter: 10 mm, Total length: 50 m

---

## Data connector

Data connector - SACC-M12MSX-8QO SH ETH - 1411043

<https://www.phoenixcontact.com/us/products/1411043>



Data connector, Ethernet CAT6<sub>A</sub> (10 Gbps), 8-position, halogen-free, shielded, Plug straight M12 SPEEDCON, Coding: X, Insulation displacement connection, knurl material: Zinc die-cast, nickel-plated, external cable diameter 5 mm ... 9.7 mm

# Bus system flush-type socket - VS-FSBPXS-OE-94F/5,0



1424164

<https://www.phoenixcontact.com/us/products/1424164>

## Conductor connectors

Conductor connectors - SACC-CC-8QO SH ETH - 1414412

<https://www.phoenixcontact.com/us/products/1414412>



Cable connector, Ethernet CAT6<sub>A</sub> (10 Gbps), 8-pos., halogen-free, shielded, insulation displacement connection, housing material: zinc die-cast, nickel-plated, outer cable diameter of 5 mm ... 9.7 mm

---

## Data connector

Data connector - VS-08-M12MS-10G-P SCO - 1417430

<https://www.phoenixcontact.com/us/products/1417430>



Data connector, Ethernet CAT6<sub>A</sub> (10 Gbps), 8-position, shielded, Plug straight M12 SPEEDCON, Coding: X, Piercecon<sup>®</sup>, knurl material: Zinc die-cast, nickel-plated, external cable diameter 4 mm ... 8 mm

# Bus system flush-type socket - VS-FSBPXS-OE-94F/5,0



1424164

<https://www.phoenixcontact.com/us/products/1424164>

## Data connector

Data connector - VS-08-M12MR-10G-P SCO - 1417443

<https://www.phoenixcontact.com/us/products/1417443>



Data connector, Ethernet CAT6<sub>A</sub> (10 Gbps), 8-position, shielded, Plug angled M12 SPEEDCON, Coding: X, Piercecon<sup>®</sup>, knurl material: Zinc die-cast, nickel-plated, external cable diameter 4 mm ... 8 mm

---

## Data connector

Data connector - SACC-M12MSX-8CT-CL SH - 1422844

<https://www.phoenixcontact.com/us/products/1422844>



Data connector, Ethernet CAT6<sub>A</sub> (10 Gbps), PROFINET CAT6<sub>A</sub> (10 Gbps), 8-position, shielded, Plug straight M12, Coding: X, Crimp connection, knurl material: Zinc die-cast, tin-plated, external cable diameter 6.5 mm ... 10 mm, without crimp contacts

# Bus system flush-type socket - VS-FSBPXS-OE-94F/5,0



1424164

<https://www.phoenixcontact.com/us/products/1424164>

## Data connector

Data connector - SACC-M12MRX-8CT-CL SH - 1422845

<https://www.phoenixcontact.com/us/products/1422845>



Data connector, Ethernet CAT6<sub>A</sub> (10 Gbps), PROFINET CAT6<sub>A</sub> (10 Gbps), 8-position, shielded, Plug angled M12, Coding: X, Crimp connection, knurl material: Zinc die-cast, tin-plated, external cable diameter 6.5 mm ... 10 mm, without crimp contacts

---

## RJ45 connector

RJ45 connector - VS-08-RJ45-10G/Q - 1419001

<https://www.phoenixcontact.com/us/products/1419001>



RJ45 connector, IP20, CAT6<sub>A</sub>, 8-pos., with QUICKON fast connection technology, for 26 ... 24 AWG 1-wire and 7-wire conductors, color: black

# Bus system flush-type socket - VS-FSBPXS-OE-94F/5,0



1424164

<https://www.phoenixcontact.com/us/products/1424164>

## RJ45 connector

RJ45 connector - CUC-IND-C1ZNI-S/R4IE8 - 1421607

<https://www.phoenixcontact.com/us/products/1421607>



RJ45 connector, type: RJ45, degree of protection: IP20, number of positions: 8, 1 Gbps, CAT5 (IEC 11801:2002), material: Zinc die-cast, connection method: IDC fast connection, connection cross section: AWG 26- 24, cable outlet: straight, color: green, Ethernet

---

## RJ45 connector

RJ45 connector - CUC-IND-C1ZNI-T/R4IE8 - 1421877

<https://www.phoenixcontact.com/us/products/1421877>



RJ45 connector, type: RJ45, degree of protection: IP20, number of positions: 8, 1 Gbps, CAT5 (IEC 11801:2002), material: Zinc die-cast, connection method: IDC fast connection, connection cross section: AWG 26- 24, cable outlet: angled, Ethernet



# Bus system flush-type socket - VS-FSBPXS-OE-94F/5,0



1424164

<https://www.phoenixcontact.com/us/products/1424164>

## RJ45 connector

RJ45 connector - CUC-IND-C1ZNI-B/R4IE8 - 1421876

<https://www.phoenixcontact.com/us/products/1421876>



RJ45 connector, type: RJ45, degree of protection: IP20, number of positions: 8, 1 Gbps, CAT5 (IEC 11801:2002), material: Zinc die-cast, connection method: IDC fast connection, connection cross section: AWG 26- 24, cable outlet: angled, Ethernet

---

## RJ45 connector

RJ45 connector - CUC-V06-C1PGY-S/R4CEA:1 - 1414406

<https://www.phoenixcontact.com/us/products/1414406>



RJ45 connector, type: RJ45, degree of protection: IP67, 10 Gbps, CAT6<sub>A</sub>, material: PA, connection method: Crimp connection, connection cross section: AWG 24- 27, cable outlet: straight, color: gray, Ethernet/PROFINET

# Bus system flush-type socket - VS-FSBPXS-OE-94F/5,0



1424164

<https://www.phoenixcontact.com/us/products/1424164>

## RJ45 connector

RJ45 connector - CUC-V06-C1PBK-S/R4CEA:1 - 1414410

<https://www.phoenixcontact.com/us/products/1414410>



RJ45 connector, type: RJ45, degree of protection: IP67, number of positions: 8, 10 Gbps, CAT6<sub>A</sub>, material: PA, connection method: Crimp connection, connection cross section: AWG 24- 27, cable outlet: straight, color: black, Ethernet/PROFINET

---

## RJ45 connector

RJ45 connector - VS-PPC-C1-RJ45-POBK-8I10G - 1422205

<https://www.phoenixcontact.com/us/products/1422205>



RJ45 connector, IP67, with push/pull interlocking (Version 14), plastic housing, for 10 Gbps, for 24 ... 27 AWG stranded conductors

---

Phoenix Contact 2022 © - all rights reserved

<https://www.phoenixcontact.com>

Phoenix Contact USA  
586 Fulling Mill Road  
Middletown, PA 17057, United States  
(+717) 944-1300  
[info@phoenixcon.com](mailto:info@phoenixcon.com)