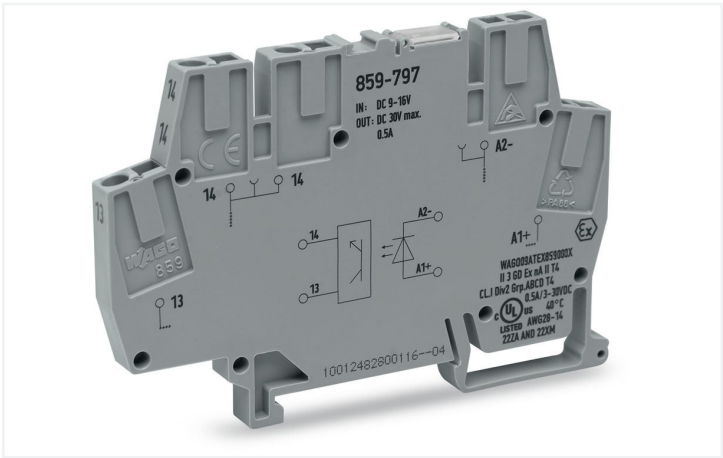


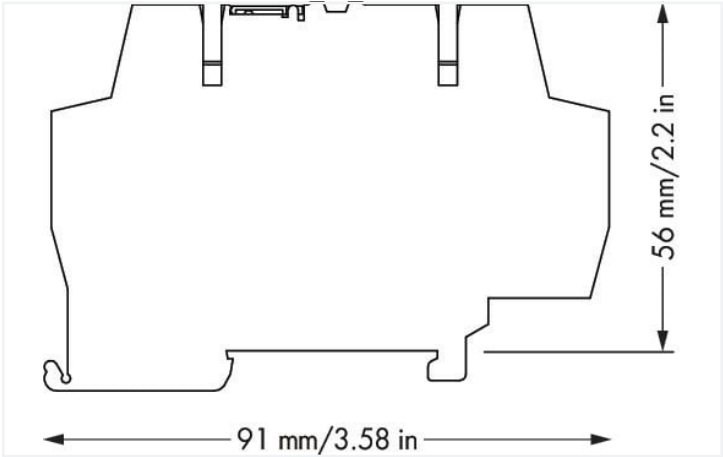
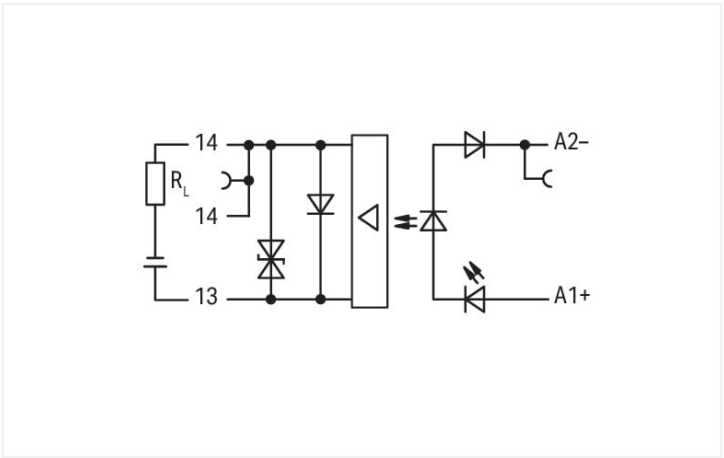
Data Sheet | Item Number: 859-797

Optocoupler module; Nominal input voltage: 12 VDC; Output voltage range: 3 ... 30 VDC; Limiting continuous current: 0.5 A; 2-wire connection; Module width: 6 mm; gray

<https://www.wago.com/859-797>



Color: gray



Dimensions in mm

Notes	
Note	Optocouplers and solid state relays are designed for use in signal processing networks, which are not supplied by the low-voltage power supply networks.

Technical data			
Control Circuit		Load circuit	
Nominal input voltage U_N	DC 12 V	Circuit type	2-wire connection
Input voltage range (low level)	DC 0 ... 5 V	Limiting continuous current	0.5 A
Input voltage range (high level)	DC 9 ... 16 V	Peak output current	2.7 A
Nominal input current at U_N	10 mA	Nominal output voltage	DC 24 V
		Output voltage range	DC 3 ... 30 V
		Voltage drop	≤ 0.2 VDC
		Turn-on time	$\leq 15 \mu s$
		Turn-off time	$\leq 100 \mu s$
		Switching frequency	≤ 2.5 kHz



Signaling	
Status indicator	Red LED

Safety and protection	
Rated voltage	300 V
Overvoltage category	II
Pollution degree	2
Dielectric strength (control/load circuit) (AC, 1 min)	2.5 kVrms
Insulation type (control/load circuit)	Basic insulation
Insulation type (between adjacent devices of the same type)	Reinforced insulation (safe isolation)
Insulation type (to adjacent devices of different types)	Reinforced insulation (safe isolation)
Protection type	IP20; in connected state or when using 859-525 end plate

Connection data	
Connection technology	CAGE CLAMP®
Solid conductor	0.08 ... 2.5 mm² / 28 ... 14 AWG
Fine-stranded conductor	0.08 ... 2.5 mm² / 28 ... 14 AWG
Fine-stranded conductor; with insulated ferrule	0.08 ... 1.5 mm² / 28 ... 16 AWG
Strip length	5 ... 6 mm / 0.2 ... 0.24 inches

Physical data	
Width	6 mm / 0.236 inches
Height	91 mm / 3.583 inches
Depth from upper-edge of DIN-rail	56 mm / 2.205 inches

Mechanical data	
Mounting type	DIN-35 rail
Mounting position	horizontal (standing/lying); vertical

Material Data	
Color	gray
Fire load	0.338 MJ
Weight	18.6 g

Environmental requirements	
Ambient temperature (operation at U _N)	-25 ... +55 °C
Ambient temperature UL (operation at U _N)	-25 ... +40 °C
Surrounding air temperature (storage)	-40 ... +70 °C
Processing temperature	-25 ... +50 °C
Temperature range of connection cable	≥ (T _{ambient} + 20 K)
Relative humidity	5 ... 95 % (no condensation permissible)
Operating altitude (max.)	2000 m



Standards and specifications	
Standards/specifications	EN 61010-2-201 EN 61000-6-2 EN 61000-6-3 UL 508

Commercial data	
Product Group	6 (INTERFACE ELECTRONIC)
eCl@ss 10.0	27-26-15-03
eCl@ss 9.0	27-26-15-03
ETIM 8.0	EC001504
ETIM 7.0	EC001504
PU (SPU)	10 pcs
Packaging type	Box
Country of origin	DE
GTIN	4055143606424
Customs tariff number	85365005000