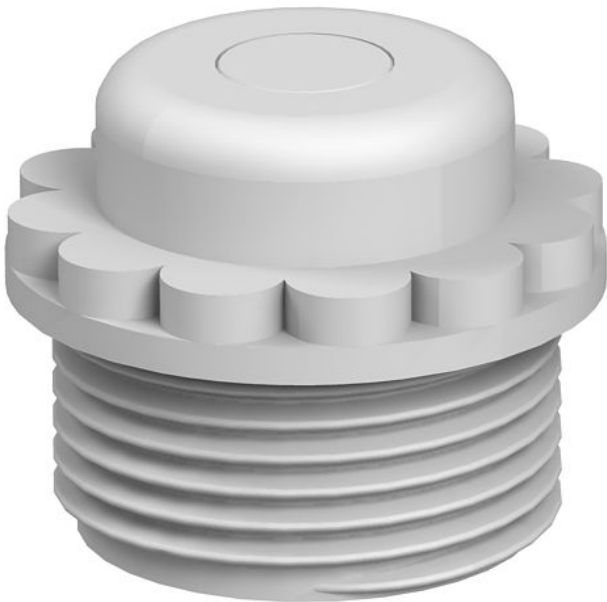


Technical data sheet

Screw-in nipple, metric thread, with perforation
membrane
Art.-Nr. 2032378



With perforation membranes, the opening D is pre-marked, but closed.
Grip seal to screw into metric thread to IEC 423.
With self-sealing cone at the end of the thread, therefore no connection thread sealing ring required.
Protection rating achievable with careful mounting: IP54.



PE Polyethylene

Additional product text 1 | With perforation membranes, the opening D is pre-marked, but closed.

Master data

Item no.	2032378
Type	90 M12 GE
Description 1	Screw-in nipple
Description 2	closed version
Dimension	M12
Colour	Light grey
RAL number	7035
Material	Polyethylene
Material symbol	PE
Smallest sales unit	100,00 Piece
Weight	0,17 kg/100 pc.

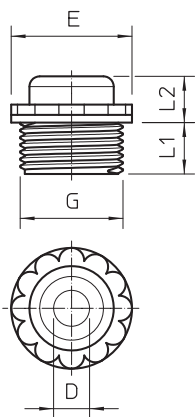
Technical data sheet

Screw-in nipple, metric thread, with perforation membrane

Art.-Nr. 2032378



Technical data



Dimension D	3,50 mm
Dimension E	17,00 mm
Dimension L1	8,00 mm
Dimension L2	6,00 mm
Thread length	8,00 mm
Thread	M12 x 1,5
Size	M12
Halogen-free	<input checked="" type="checkbox"/>
Protection rating	IP54
WAF	13,00 mm