

RAFIX 16, signal indicator, round bezel, bezel yellow



fields of application

- Measurement-control-regulation
- Electrical engineering
- Mechanical and system engineering
- Industrial robots

special features

- Leuchtvorsatz in 3 Bundformen
- Beleuchtung mit LED oder Glühlampe
- Schutzgrad: IP 65 frontseitig
- Separate aufrastbare Lampenfassung erforderlich



description

With RAFIX 16 actuating elements, you can choose between three collar types: round, square or square, in which the push-buttons can be arranged in a seamless row. The mounting diameter is in accordance with the standard 16.2 mm.

technical data

➤ general

Bezel color	yellow
Collar shape	round
Operating temperature, min.	-25 °C
Storage temperature, min.	-40 °C
Operating temperature, max.	70 °C
Storage temperature, max.	85 °C
illuminated	Yes
Packaging	Box
Packaging unit	5 pcs.
net weight	3.7 g
Degree of protection, front side, according to DIN EN 60529	IP65
Environment resistance	IEC 60068-2-14 IEC 60068-2-30 IEC 60068-2-33 IEC 60068-2-78
MOQ order	50
RoHS compliant	Yes
REACH compliant	Yes

direct links

- [RAFI eCatalog](#)

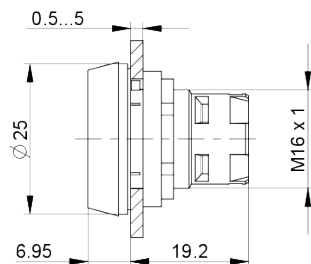
➤ mounting diameters

Mounting hole	16.2 mm
Mounting depth	44.7 mm
Installation height	6.95 mm
Grid, min.	25 x 25 mm
Outside dimension, length	24.95 mm

Outside dimension, width	24.95 mm
Outside dimension, height	26.35 mm
Collar dimension	ø 24,95 mm

> mechanical data

Operating force, max.	100 N
Fixing	Threaded ring
Threaded ring torque, max.	1.2 Nm

drawings**Dimensioned drawing****Mounting hole drawing**