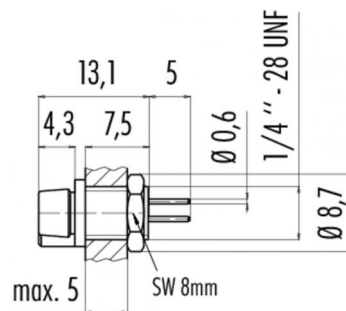


Product description	Snap-In IP40 female panel mount connector, Contacts: 4, shielding is not possible, dip-solder, IP40
Area	Snap-In IP40 series 719 - 709
Order number	09 9766 20 04

Illustration



Scale drawing



Contact arrangement



	X	Y
1	-1,06	-1,06
2	-1,06	1,06
3	1,06	1,06
4	1,06	-1,06

You can find the component part drawing and assembly instructions on the next page.

Technical data

General values

Connector design	female panel mount connector
Connector locking system	snap
Termination	dip-solder
Upper limit temperature	70 °C
Lower limit temperature	- 25 °C
Customs tariff number	85369010
Packaging Unit	1

Electrical values

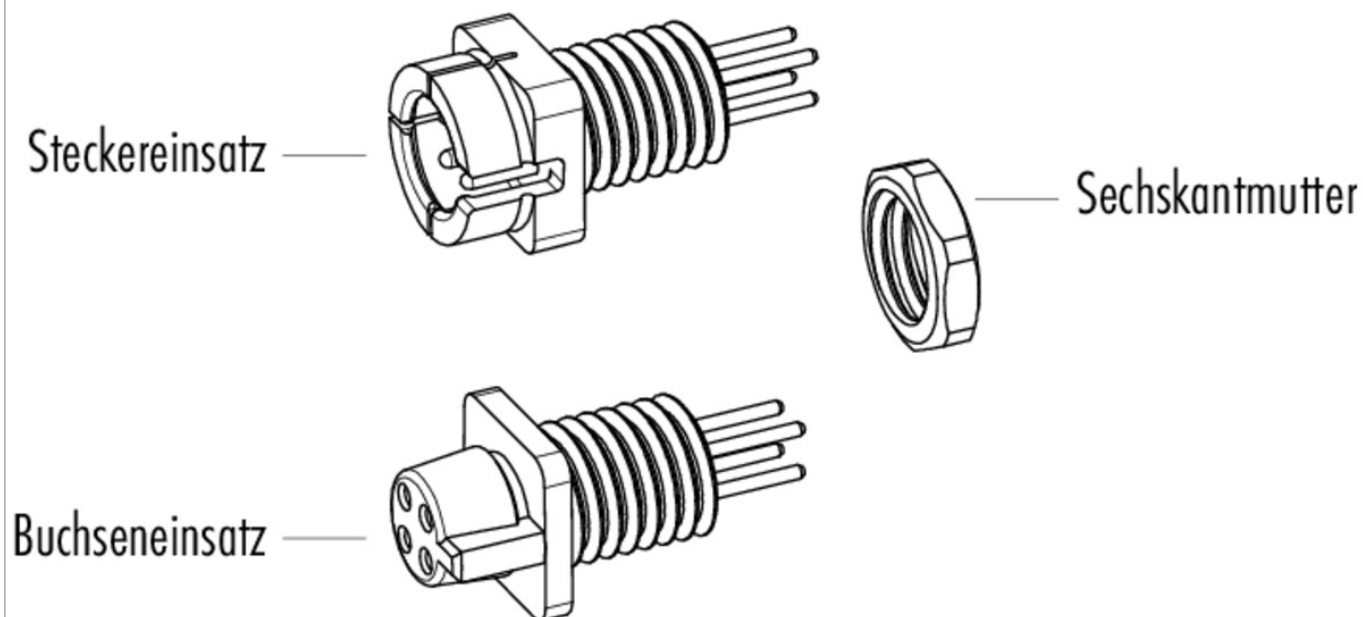
Rated current (40 °C)	3 A
Rated voltage	60 V
Rated impulse voltage	800 V
Pollution degree	1
Overvoltage category	II
Insulating material group	III
Insulation resistance	$\geq 10^{10} \Omega$
EMC compliance	shielding is not possible
Degree of protection	IP40
Mechanical operation	> 100 Mating cycles

Material

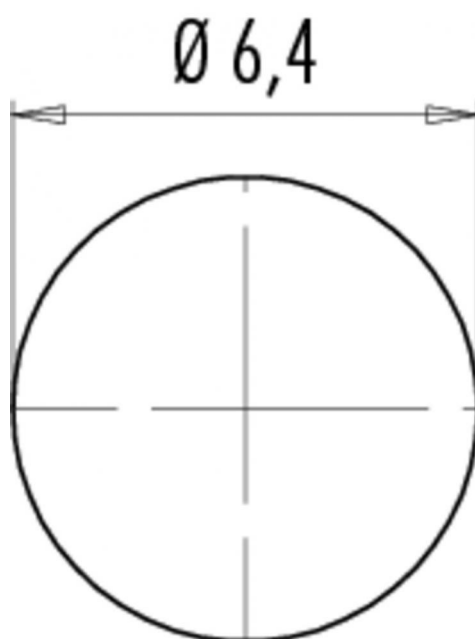
Contact material	CuSn (bronze)
Contact plating	Au (gold)
Contact body material	PA
Housing material	PA

Product description	Snap-In IP40 female panel mount connector, Contacts: 4, shielding is not possible, dip-solder, IP40
Area	Snap-In IP40 series 719 · 709
Order number	09 9766 20 04

Component part drawing



Assembly instructions / Panel cut-out



Product description	Snap-In IP40 female panel mount connector, Contacts: 4, shielding is not possible, dip-solder, IP40
Area	Snap-In IP40 series 719 · 709
Order number	09 9766 20 04

Security notices

The connectors are designed for use in plant, control system and electrical equipment. The end user is responsible for checking whether the connectors are suitable for use in other applications.