

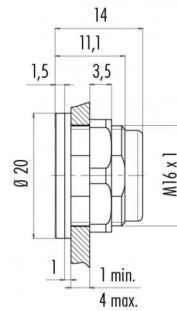
Product description **Snap-In IP67 adapter, pluggable**

Area **Snap-In IP67 series 620**
 Order number **08 2636 000 001**

Illustration



Scale drawing



**You can find the
 component part drawing
 and assembly instructions
 on the next page.**

Technical data

General values

Connector design	adapter
Connector locking system	snap
Termination	pluggable
Customs tariff number	85366990
Packaging Unit	100

Electrical values

Pollution degree	2
Mechanical operation	> 500 Mating cycles

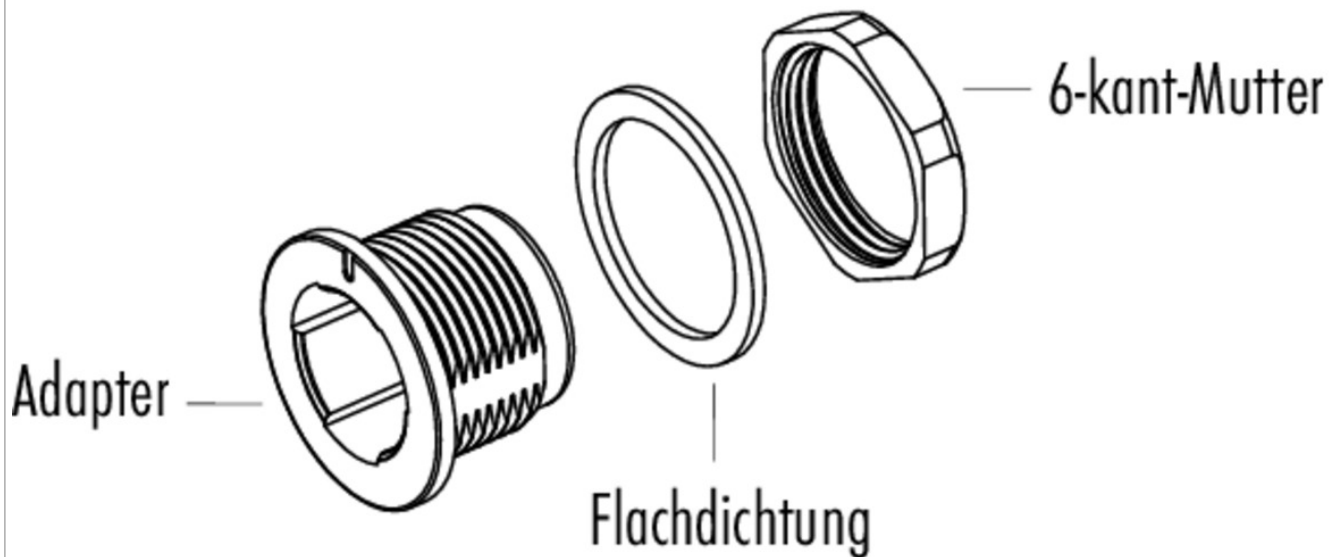
Material

Contact body material	PA (UL94 V-0)
-----------------------	---------------

Product description **Snap-In IP67 adapter, pluggable**

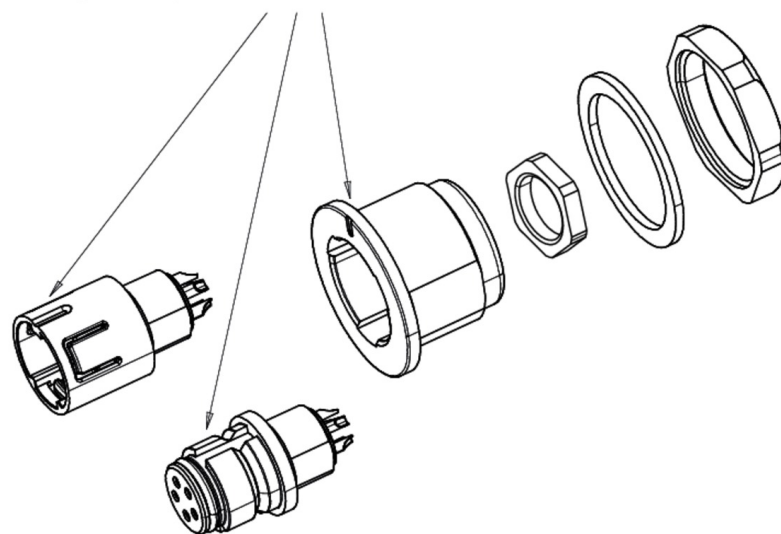
Area **Snap-In IP67 series 620**
Order number **08 2636 000 001**

Component part drawing



Assembly instructions / Panel cut-out

Die Markierung des Adapters muss mit der Kodiernase des Einsatzes übereinstimmen

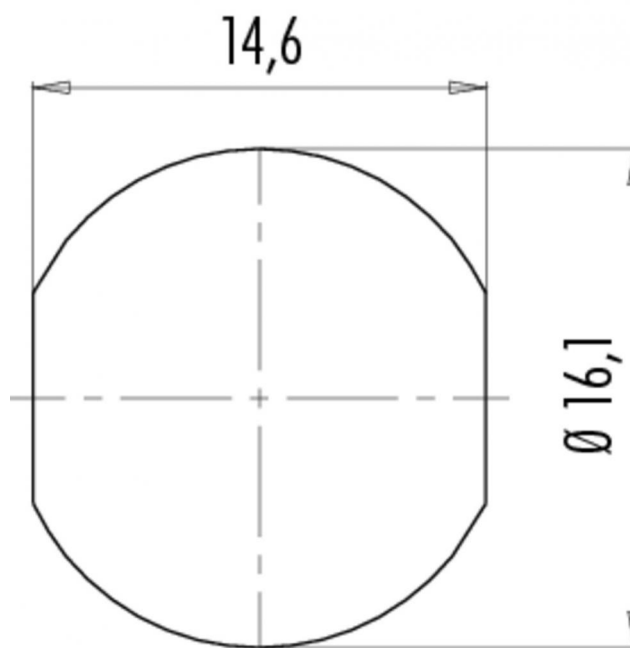


Einsätze müssen separat bestellt werden

Product description **Snap-In IP67 adapter, pluggable**

Area **Snap-In IP67 series 620**
Order number **08 2636 000 001**

Assembly instructions / Panel cut-out



Product description	Snap-In IP67 adapter, pluggable
---------------------	--

Area	Snap-In IP67 series 620
Order number	08 2636 000 001

Security notices

The connector must not be connected or separated under load. Non-observance and incorrect use can result in personal injury.

The connectors are designed for use in plant, control system and electrical equipment. The end user is responsible for checking whether the connectors are suitable for use in other applications.