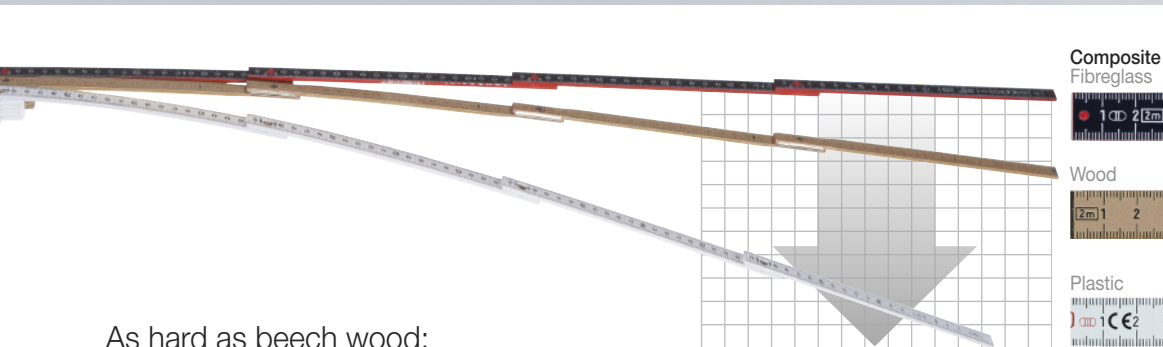


LongLife® Plus Composite

New 2012

Maximum flexural strength

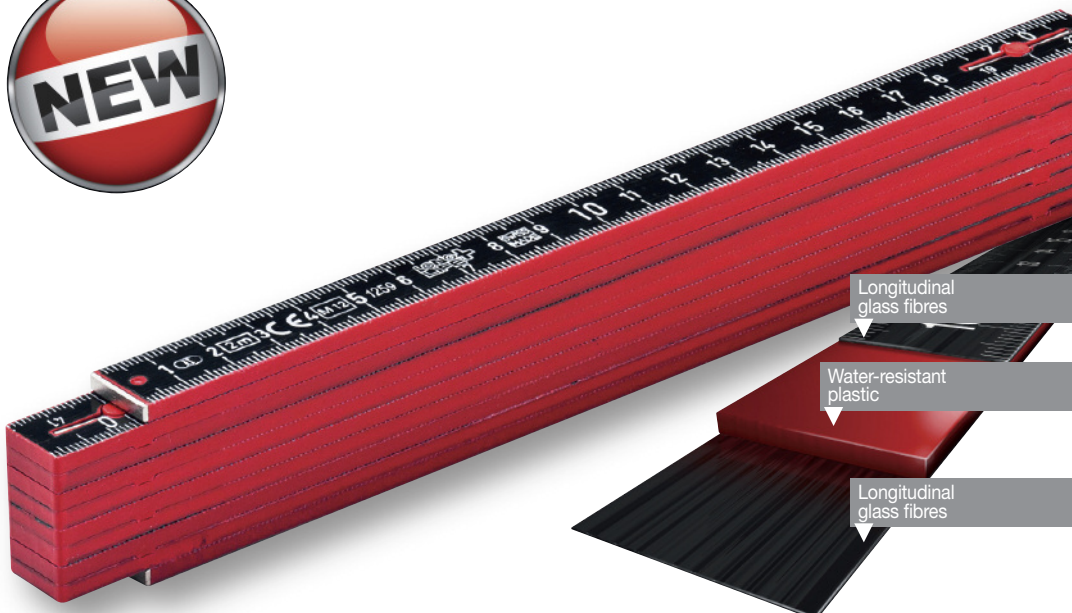


As hard as beech wood:

Top layers made of longitudinal glass fibres absorb bending forces and lend the composite its unmatched rigidity. Horizontal and vertical measurements are possible using only one hand.

Select your colour:

Article no.	Order no.	Description	Price/piece.
410 2005 4	37067	LongLife® Plus Composite 2 m, red-black, 10 blades, accuracy class II, CE-tested	10 9,80 €
410 2005 5	37309	LongLife® Plus Composite 2 m, grey-white, 10 blades, accuracy class II, CE-tested	10 9,80 €



Extremely rigid!

- Absorbs bending forces
- Minimises risk of breakage

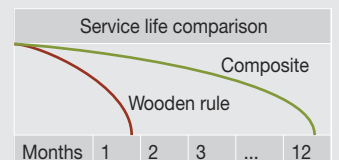


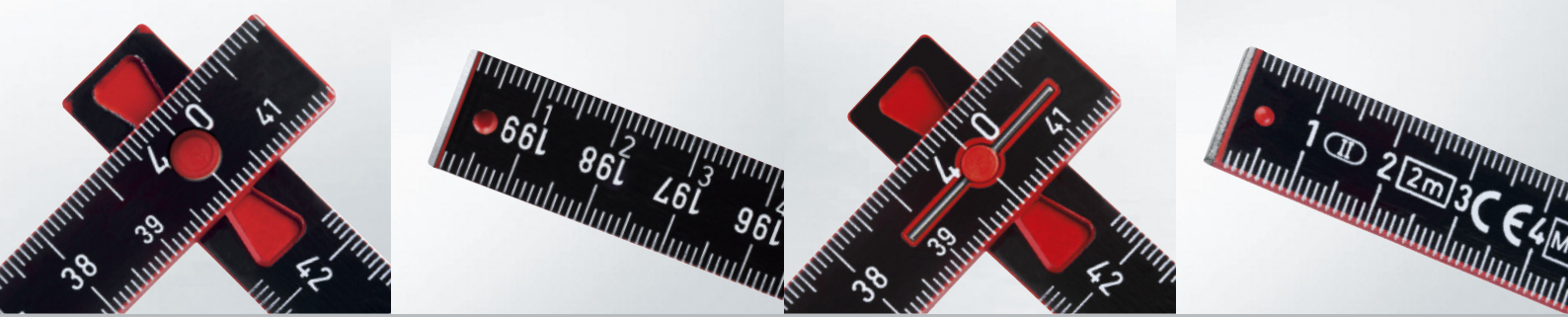
Extremely durable!

- No swelling with water contact
- Resistant against many chemicals

Lasts up to 10 times longer!

- Rigidity ensured by longitudinal glass fibres
- Weatherproof and temperature-resistant plastic
- Wear-resistant joints
- Metal ends cannot be lost (protective function)

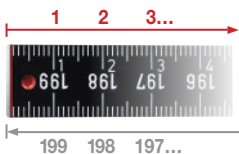




LongLife® Plus Composite

Application-oriented. Durable. Precise.

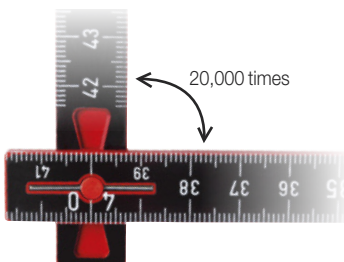
- Scales marked left to right and right to left



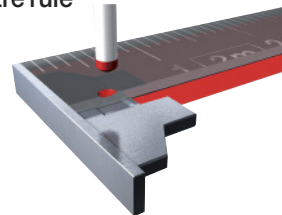
- No swelling with water contact
- Resistant against many chemicals
- Weatherproof and temperature-resistant plastic
- Washable



- Patented joint with preloaded spring pins
- Minimum play throughout the entire service life
Test: 20,000 cycles
(Approx. 2 years for 20 measurements per day)
- Tight 90° and 180° latching



- Metal ends which cannot be lost protect the beginning and end of the metre rule



- Accuracy class II:
As precise as metal measurement tools



- Two complete scales on both sides



- Abrasion-proof, deep hot-stamped scale



wiha 
Premium Tools

Wiha Werkzeuge GmbH
Obertalstraße 3-7
D-78136 Schonach/Germany
Tel. +49 7722 959-0
Fax +49 7722 959-159
info@wiha.com
www.wiha.com