

# Product data sheet

## Miniature connectors



Product description **Push-Pull female panel mount connector, Contacts: 12, shielding is not possible, solder, IP67**

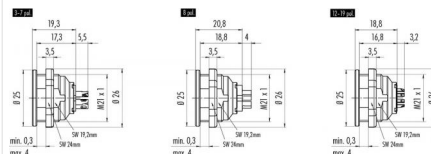
Area **Push-Pull series 440**

Order number **09 4836 15 12**

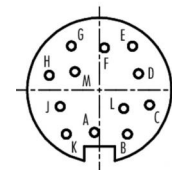
### Illustration



### Scale drawing



### Contact arrangement



	X	Y
A	-0,44	-3,45
B	2,29	-3,61
C	4,10	-1,21
D	3,20	1,34
E	2,71	3,59
F	0,41	3,45
G	-2,29	3,61
H	-4,10	1,21
J	-3,20	-1,34
K	-2,71	-3,59
L	2,00	-1,51
M	-2,00	1,51

You can find the component part drawing and assembly instructions on the next page.

## Technical data

### General values

Connector design female panel mount connector

Connector locking system Push-Pull

Termination solder

Wire gauge (mm) 0.25 mm<sup>2</sup>

Wire gauge (AWG) 24

Upper limit temperature 85 °C

Lower limit temperature - 40 °C

Customs tariff number 85369010

Packaging Unit 15

### Electrical values

Rated current (40 °C) 3 A

Rated voltage 60 V

Rated impulse voltage 500 V

Pollution degree 1

Overvoltage category I

Insulating material group III

Insulation resistance  $\geq 10^{10} \Omega$

EMC compliance shielding is not possible

Degree of protection IP67

Mechanical operation > 1000 Mating cycles

### Material

Contact material CuSn (bronze)

Contact plating Au (gold)

Contact body material PBT (UL94 V-0)

Product description

Push-Pull female panel mount connector, Contacts: 12, shielding is not possible, solder, IP67

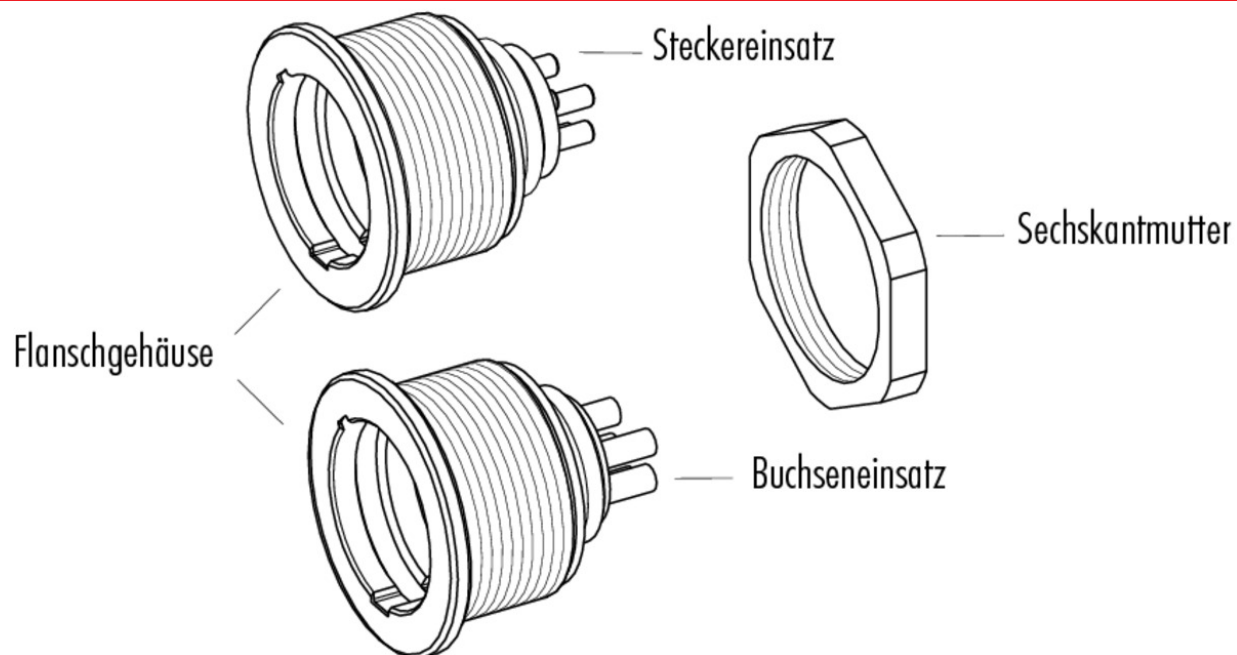
Area

Push-Pull series 440

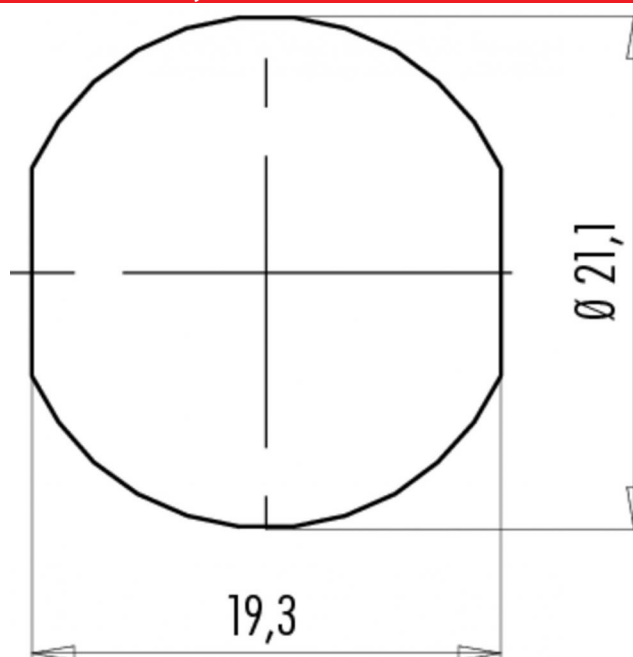
Order number

09 4836 15 12

### Component part drawing



### Assembly instructions / Panel cut-out



Product description	<b>Push-Pull female panel mount connector, Contacts: 12, shielding is not possible, solder, IP67</b>
Area	<b>Push-Pull series 440</b>
Order number	<b>09 4836 15 12</b>

## Security notices

The connectors are designed for use in plant, control system and electrical equipment. The end user is responsible for checking whether the connectors are suitable for use in other applications.

Connectors with degree of protection IP 67 and IP 68 are not suitable for use under water. When used outdoors, the connectors must be separately protected against corrosion. For further information about IP degrees of protection refer to 'Technical support' in the Download Centre.