

Completely pre-assembled Signal Towers / ClearSIGN

## Fixing bracket WH

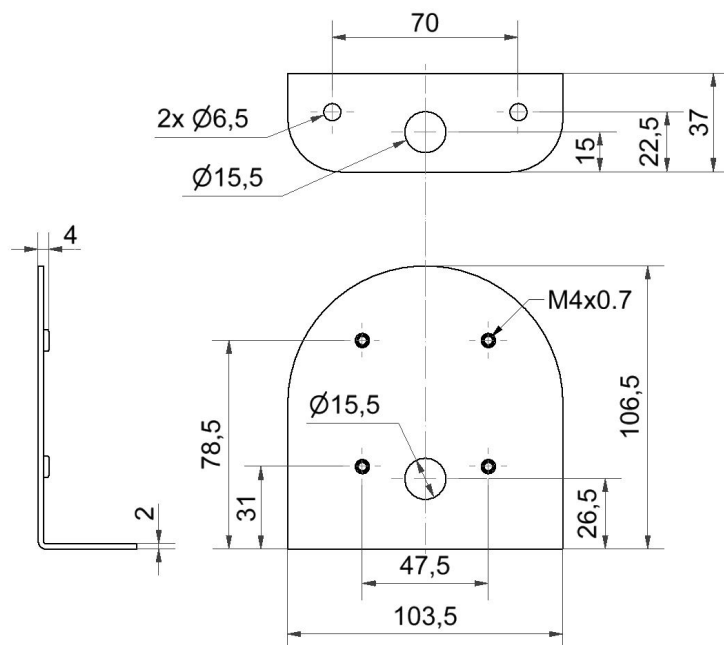


**Part No.:** 975.656.01

### MECHANICAL DATA

Length	107 mm
Width	104 mm
Height	37 mm
Housing colour	White
Weight with packaging	257 g
Product weight	228 g

### DRAWING



For additional installation and mounting information, refer to the appropriate user guide at [www.werma.com](http://www.werma.com). This printed copy is for information only and is subject to alteration.