

A2423068

SPINDLE-SHAPED KNOB 23, with line

Suitable for rotary potentiometer with round shaft ends according to DIN 41591. Collet system for convenient knob assembly from the front and simple adjustment (with adjustment key - sep. article). Center hole with chamfer. Black marking.

Supply

1 spindle-shaped knob



TECHNICAL DATA

Material	ABS (UL 94 HB)	Diameter	23 mm
Colour	dusty grey RAL 7037	Height	16 mm
Standards	RoHS compliant, REACH compliant	Bore hole	6 mm

Please take the dimensions from current parts. These are subject to material- and manufacturing-specific tolerances.

PURCHASING DATA

Weight/1 part	7 g
Customs tariff number (OKW product)	84879090
Country of manufacture	Germany

CUSTOMISING OPTIONS

What else do you need to create your own personal product? We can supply our enclosures and tuning knobs fully modified to suit your electronic components and design requirements. Please advise for anything else we can do for you.

A2423068

SPINDLE-SHAPED KNOB 23, with line

Customising options for A2423068



Machining



Printing



Installation / Assembly
of accessories

A2423068

SPINDLE-SHAPED KNOB 23, with line

SYSTEM COMPONENTS TO COMPLETE



A5023000
Cover 23, without line
ABS (UL 94 HB)
black RAL 9005



A5023008
Cover 23, without line
ABS (UL 94 HB)
dusty grey RAL 7037



A5023100
Cover 23, with line
ABS (UL 94 HB)
black RAL 9005

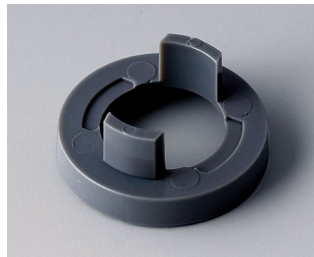


A5023108
Cover 23, with line
ABS (UL 94 HB)
dusty grey RAL 7037

ACCESSORY "SCREWS"



A5123000
Nut cover 23, without line
ABS (UL 94 HB)
black RAL 9005



A5123008
Nut cover 23, without line
ABS (UL 94 HB)
dusty grey RAL 7037



A6207009
Round nut M7 x 0.75



A6210009
Round nut M10 x 0.75

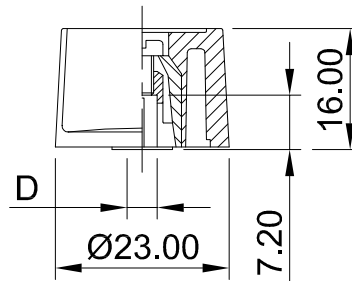


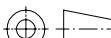

A6295009
Round nut 3/8"-32G



A6300000
Spanner

Subject to technical modification without notice. © by OKW Gehäusesysteme, Buchen/Germany.



<div>Informationskopie Copy for Information</div> <div>will not be updated wird nicht aktualisiert</div> <div>Technische Änderungen vorbehalten. Irrtümer und Druckfehler begründen keinen Anspruch auf Schadenersatz Wichtige Einbaumaße bitte direkt mit dem aktuellen Produkt abstimmen.</div> <div>Subject to technical modification without prior notice. Typographical and other errors do not justify any claim for damages. All dimensions should be verified using an actual moulded part.</div> <div>Sous réserve de modifications techniques. Toute erreur ou faute d'impression ne justifie aucune demande d'indemnisation. Nous prions les clients de vérifier les dimensions des composants avec les boîtiers avant le montage.</div>	Bearb. am: 01.03.94	Material:	Toleranzen: DIN 16901 T130	 DIN 6 Teil 2	
	Ersteller: HASSELB	Farbe:	Zeichnungsart: KATALOG		
	Freigabe:	Rev. Index: 2	This document contains proprietary information of OKW Gehäusesysteme GmbH and is tendered subject to the conditions that the information be retained in confidence not be reproduced or copied and not be used or incorporated in any product.	Maßstab: 1:1	
	Stand: 07.05.04				
				KOMBI SPINDLE-SHAPED KNOB 23	
		A2*230**			
Für dieses Dokument behalten wir uns alle Urheberrechte vor. Es darf auch auszugsweise weder vervielfältigt noch Dritten in irgendeiner Form zugänglich gemacht werden.			Dateiname: 000848-4		