



Connectors > Modular Jacks & Plugs > RJ22 Connectors



Connector Profile: **Standard**
Modular Jacks & Plugs Products: **RJ Type Jacks & Plugs**
Connector Contact Density: **Standard**
Modular Connector Style: **Jack**
PCB Mount Orientation: **Vertical**

Features

Product Type Features

Modular Jacks & Plugs Products	RJ Type Jacks & Plugs
Modular Connector Style	Jack
Connector System	Cable-to-Board
Connector & Contact Terminates To	Printed Circuit Board

Configuration Features

Port Matrix Configuration	1 x 1
Port Configuration	Single Port
Connector Contact Density	Standard
PCB Mount Orientation	Vertical
Number of Positions	4
Number of Loaded Positions	4

Body Features

Modular Jack Latch Orientation	Standard - Latch Down
Connector Profile	Standard

Contact Features

Contact Underplating Material	Nickel
Contact Base Material	Phosphor Bronze
Contact Mating Area Plating Material	Gold Flash over Palladium Nickel



Contact Current Rating (Max)	1.5 A
PCB Contact Termination Area Plating Material	Tin-Lead

Termination Features

Termination Method to Printed Circuit Board	Through Hole - Solder
---------------------------------------------	-----------------------

Mechanical Attachment

Panel Mount Feature Type	Panel Stops
Panel Mount Feature	Without
Connector Mounting Type	Board Mount

Housing Features

Housing Color	Black
Mating Entry Location	Top
Housing Material	PBT
Centerline (Pitch)	1.02 mm[.04 in]

Dimensions

PCB Thickness (Recommended)	1.6 mm[.063 in]
Connector Height	16.4 mm[.646 in]

Usage Conditions

Operating Temperature Range	-40 – 70 °C[-40 – 158 °F]
-----------------------------	---------------------------

Operation/Application

Shielded	No
Circuit Application	Signal

Industry Standards

Performance Category	Cat 3
UL Flammability Rating	UL 94HB

Packaging Features

Packaging Method	Reel, Tape Mounted on Reel
Packaging Quantity	700

Product Compliance

For compliance documentation, visit the product page on TE.com>

EU RoHS Directive 2011/65/EU	Compliant
EU ELV Directive 2000/53/EC	Compliant



China RoHS 2 Directive MIIT Order No 32, 2016	No Restricted Materials Above Threshold
EU REACH Regulation (EC) No. 1907/2006	Current ECHA Candidate List: JUNE 2022 (224) Candidate List Declared Against: JUNE 2022 (224) Does not contain REACH SVHC
Halogen Content	Not Low Halogen - contains Br or Cl > 900 ppm.
Solder Process Capability	Wave solder capable to 265°C

Product Compliance Disclaimer

This information is provided based on reasonable inquiry of our suppliers and represents our current actual knowledge based on the information they provided. This information is subject to change. The part numbers that TE has identified as EU RoHS compliant have a maximum concentration of 0.1% by weight in homogenous materials for lead, hexavalent chromium, mercury, PBB, PBDE, DBP, BBP, DEHP, DIBP, and 0.01% for cadmium, or qualify for an exemption to these limits as defined in the Annexes of Directive 2011/65/EU (RoHS2). Finished electrical and electronic equipment products will be CE marked as required by Directive 2011/65/EU. Components may not be CE marked. Additionally, the part numbers that TE has identified as EU ELV compliant have a maximum concentration of 0.1% by weight in homogenous materials for lead, hexavalent chromium, and mercury, and 0.01% for cadmium, or qualify for an exemption to these limits as defined in the Annexes of Directive 2000/53/EC (ELV). Regarding the REACH Regulation, the information TE provides on SVHC in articles for this part number is based on the latest European Chemicals Agency (ECHA) ‘Guidance on requirements for substances in articles’ posted at this URL: <https://echa.europa.eu/guidance-documents/guidance-on-reach>

Compatible Parts

TE Part # 216562-3
4/4 PCB MOD.JACK TE

Also in the Series | CGS TE

Chassis Mount Resistors(747)

RJ11 Connectors(1)

RJ14 Connectors(4)

RJ22 Connectors(5)



RJ25 Connectors(4)

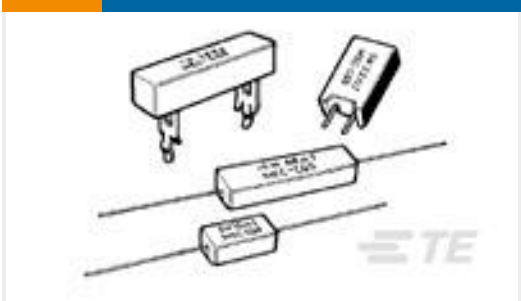


RJ45 Connectors(30)

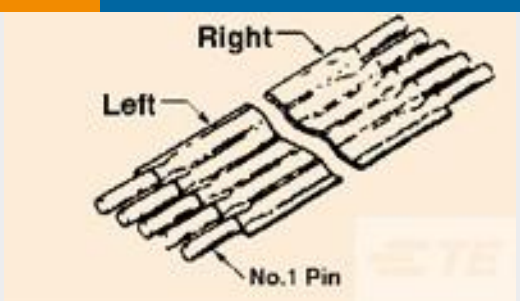
Customers Also Bought



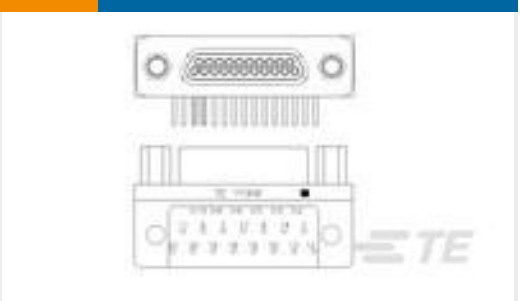
TE Part #1-6609031-2
5ER7M=F7188 S0



TE Part #1-1623781-0
SQM2 10K 5% (METAL FILM)



TE Part #2-1437192-5
FST-54A-6



TE Part #1-1532252-1
M83513/10-C03NN = MCKS-N1-B-21PRT1B



TE Part #1-2215056-4
ASSY, EXTRACT TL, QSFP28 1X4



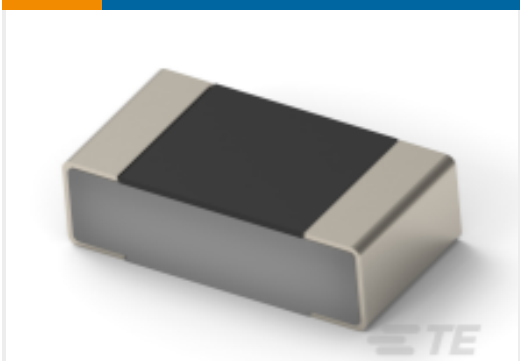
TE Part #2-2170747-1
CAGE ASSY, 1X4, QSFP28, SPRING, HS, LP



TE Part #1879531-6
CRGV2010 5% 82K 3000V



TE Part #1-1618002-6
EV200H2ANA=RELAY, SPST-NO W /AUX



TE Part #1-1879808-9
RP 1J 511R 0.1% 15PPM 1K RL



TE Part #1-2176377-3
RQ 0805 178K 0.1% 10PPM 1K RL

Documents

Product Drawings
4/4 PCB MOD.JACK TE

English

CAD Files
3D PDF

English

Customer View Model
ENG_CVM_216562-1_A2.2d_dxf.zip



English

Customer View Model

[ENG_CVM_216562-1_A2.3d_igs.zip](#)

English

Customer View Model

[ENG_CVM_216562-1_A2.3d_stp.zip](#)

English

By downloading the CAD file I accept and agree to the [Terms and Conditions](#) of use.

Datasheets & Catalog Pages

[1-1773464-9_MODULAR_JACKS_SINGLE_PORT_PCB_MOUNT](#)

English