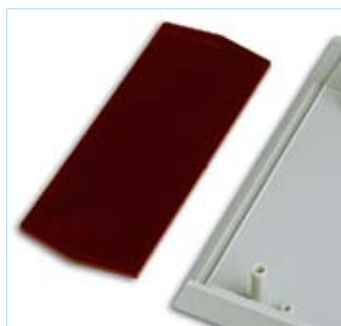
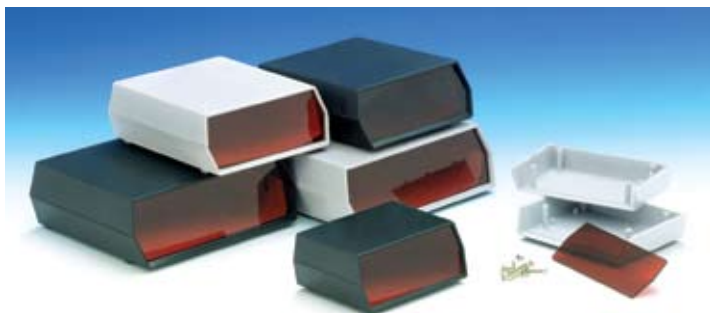




The FRONT PANEL series, available in over fifty models, is ideally suited to a variety of electronic desktop applications. The enclosures are manufactured from high ABS or high impact polystyrene. They are available with either aluminium or plastic front and rear panels. All models have internal guide and PCB mounting studs.



Applications: • alarms and security systems • test equipments • computer peripherals • modems • laboratory technology.

DIGITAL



DESIGN

A polystyrene enclosure with a red polystyrene 20° inclined panel. Each half-shell has integral PCB mounting studs. The models "D/13" and "D/14" have in the rear side a cutout for cabling. Matt surface finishing. Closing by four screws.

	Part-No		Ext. Dimensions			Material	Max PCB Size				Accessories
	Light gray	Black	L	W	H		L	W			
	RAL 9018	RAL 9004									
DIGITAL	D-12.5	D-12.9	119,5	89	50	Ps	-	-	4	-	-
	D-13.5	D-13.9	135	150	54	Ps	-	-	4	-	-
	D-14.5	D-14.9	181	155	60	Ps	-	-	4	-	-