

Main

| | |
|---------------------------|--|
| Range of product | Lexium integrated drive |
| Product or component type | Motion integrated drive |
| Device short name | ILA |
| Motor type | AC synchronous servo motor |
| Number of motor poles | 6 |
| Network number of phases | Single phase |
| [Us] rated supply voltage | 36 V 24 V |
| Network type | DC |
| Communication interface | CANopen DS301, integrated |
| Length | 209.3 mm |
| Winding type | Medium speed of rotation and medium torque |
| Electrical connection | Industrial connector |
| Holding brake | With |
| Gear box type | Without |
| Nominal speed | 2600 rpm at 24 V 4300 rpm at 36 V |
| Nominal torque | 0.45 N.m |
| Holding torque | 1.2 N.m holding brake |

Complementary

| | |
|---------------------------------------|---|
| Transmission rate | 50, 100, 125, 250, 500, 800 and 1000 kbauds |
| Mounting support | Flange |
| Motor flange size | 57 mm |
| Number of motor stacks | 2 |
| Centring collar diameter | 50 mm |
| Centring collar depth | 1.6 mm |
| Number of mounting holes | 4 |
| Mounting holes diameter | 5.2 mm |
| Circle diameter of the mounting holes | 66.6 mm |
| Feedback type | Single turn encoder |
| Shaft end | Untapped |
| Second shaft | Without second shaft end |
| Shaft diameter | 9 mm |
| Shaft length | 20 mm |
| Supply voltage limits | 18...40 V |
| Current consumption | 7000 mA maximum continuous 8500 mA peak |
| Associated fuse rating | 10 A |
| Input/output type | 4 signals (each be used as input or output) |
| Voltage state 0 guaranteed | -3...4.5 V |
| Voltage state 1 guaranteed | 15...30 V |
| Discrete input current | 10 mA at 24 V on/STO_A for safety input 3 mA at 24 V on/STO_B for safety input 2 mA at 24 V for 24 V signal interface |
| Discrete output voltage | 23...25 V |

| | |
|---------------------------|--|
| Maximum switching current | 100 MA per output 200 mA total |
| Protection type | Safe torque off Overload of output voltage Short circuit of the output voltage |
| Peak stall torque | 0.72 N.m |
| Continuous stall torque | 0.45 N.m |
| Speed feedback resolution | 16384 points/turn x 4096 turns |
| Accuracy error | +/- 0.05 ° |
| Rotor inertia | 0.25 kg.cm ² |
| Maximum radial force Fr | 107 N |
| Maximum axial force Fa | 104 N (force pressure) 104 N (tensile force) |
| Service life in hours | 20000 h bearing |
| Brake pull-in power | 10 W |
| Brake release time | 14 ms |
| Brake application time | 13 ms |
| Marking | CE |
| Type of cooling | Natural convection |
| Net weight | 1.7 kg |

Environment




| | |
|---|---|
| Standards | IEC 61800-3, Ed 2 EN 61800-3 : 2001-02 IEC 60072-1 EN 61800-3:2001, second environment EN/IEC 61800-3 EN 50347 EN/IEC 50178 |
| Product certifications | CUL TÜV UL |
| Ambient air temperature for operation | 50...65 °C (with power derating of 2 % per °C) 0...50 °C (without derating) |
| Permissible ambient air temperature around the device | 105 °C power amplifier 110 °C motor |
| Ambient air temperature for storage | -25...70 °C |
| Operating altitude | <= 1000 m without derating |
| Relative humidity | 15...85 % without condensation |
| Vibration resistance | 20 m/s ² (f= 10...500 Hz) 10 cycles conforming to EN/IEC 60068-2-6 |
| Shock resistance | 150 m/s ² 1000 shocks conforming to EN/IEC 60068-2-29 |
| IP degree of protection | IP41 shaft bushing: conforming to EN/IEC 60034-5 IP54 total except shaft bushing: conforming to EN/IEC 60034-5 |

Packing Units

| | |
|------------------------------|---------|
| Unit Type of Package 1 | PCE |
| Number of Units in Package 1 | 1 |
| Package 1 Height | 8.0 cm |
| Package 1 Width | 19.0 cm |
| Package 1 Length | 39.0 cm |
| Package 1 Weight | 2.5 kg |

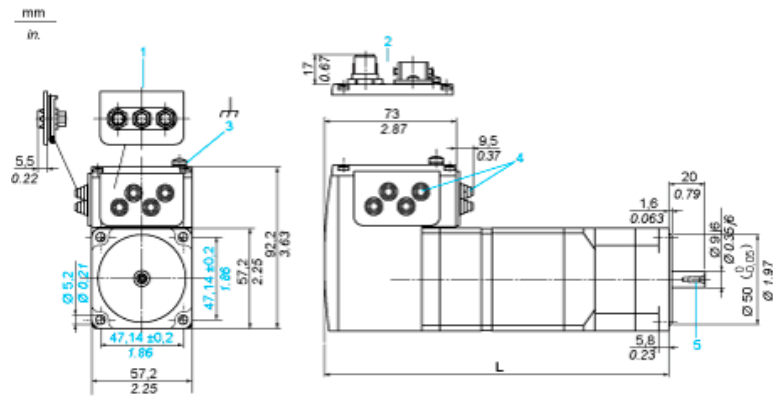
Offer Sustainability

| | |
|--------------------------|--|
| Sustainable offer status | Green Premium product |
| REACH Regulation |  REACH Declaration |
| EU RoHS Directive | Pro-active compliance (Product out of EU RoHS legal scope)  EU RoHS Declaration |
| Mercury free | Yes |
| China RoHS Regulation |  China RoHS Declaration |

| | |
|-----------------------------|---|
| RoHS exemption information |  Yes |
| Environmental Disclosure |  Product Environmental Profile |
| Circularity Profile |  End Of Life Information |
| WEEE | The product must be disposed on European Union markets following specific waste collection and never end up in rubbish bins |
| PVC free | Yes |
| Contractual warranty | |
| Warranty | 18 months |

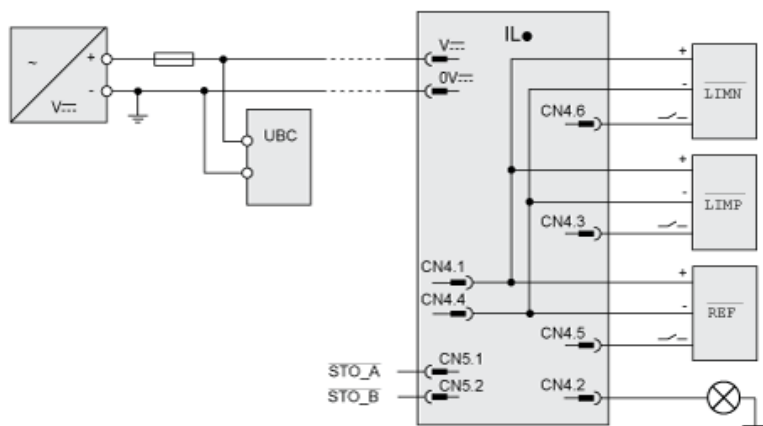
Integrated Drive with Holding Brake

Dimensions

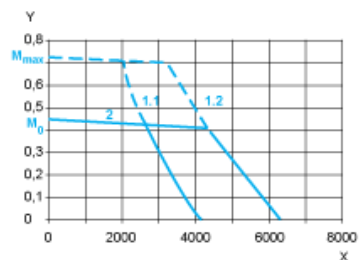


- 1 Accessories: I/O signal insert with industrial connectors
2 Option: industrial connectors
3 Earth (ground) terminal
4 Accessories: cable entries $\varnothing = 3 \dots 9 \text{ mm}/0.12 \dots 0.35 \text{ in.}$
5 Centring hole DIN 332 - DS M3
L 209.3 mm/8.24 in.

Connection Example with 4 I/O Signals



Torque Characteristics



- X Speed of rotation in rpm
Y Torque in Nm
1.1 Max. torque at 24 V
1.2 Max. torque at 36 V
2 Continuous torque