

Flush-type connector - SACC-CI-M12FSY-8P SMD SH T



1411965

<https://www.phoenixcontact.com/us/products/1411965>

Please be informed that the data shown in this PDF document is generated from our Online Catalog. Please find the complete data in the user documentation. Our General Terms of Use for Downloads are valid.



Hybrid flush-type female connector, Ethernet, 8-pos., M12 SPEEDCON, with straight solder connection. tray packaging

Your advantages

- Reduced mounting costs thanks to two-piece device connector
- Packaging available for automated pick and place assembly
- All common pin assignments and codings available
- Easy device integration thanks to mechanical port screw connections with threaded attachment, press-in contour or direct integration in the front plate

Flush-type connector - SACC-CI-M12FSY-8P SMD SH T



1411965

<https://www.phoenixcontact.com/us/products/1411965>

Commercial Data

Item number	1411965
Packing unit	1 pc
Minimum order quantity	60 pc
Sales Key	A11
Product Key	ABQCBK
GTIN	4046356991629
Weight per Piece (including packing)	4.596 g
Weight per Piece (excluding packing)	4.596 g
Customs tariff number	85366990
Country of origin	DE

Flush-type connector - SACC-CI-M12FSY-8P SMD SH T



1411965

<https://www.phoenixcontact.com/us/products/1411965>

Technical Data

Notes

Notes on operation	The electrical and mechanical data specified assume that the connector pair is correctly locked and mounted. If the connector is unlocked and if there is a danger of contamination, the connector must be sealed using a protective cap > IP54. Influences arising from litz wires, cables or PCB assembly must also be taken into consideration.
--------------------	--

Product properties

Product type	Contact insert
Number of positions	8
Shielded	yes
Coding	Y - hybrid

Insulation characteristics

Overvoltage category	III
Degree of pollution	3

Electrical properties

Rated surge voltage	0.8 kV
Contact resistance	$\leq 3 \text{ m}\Omega$
Insulation resistance	$> 100 \text{ M}\Omega$
Nominal voltage U_N	48 V AC (Power and data)
	50 V DC (Power and data)
Nominal current I_N	0.5 A (Data)
	6 A (Power)
Transmission medium	Copper

Interfaces

Signal type/category	Universal CAT5 (IEC 11801:2002)
----------------------	---------------------------------

Material specifications

Material	Zinc die-cast, nickel-plated (Shield crossover)
Flammability rating according to UL 94	V0
Contact material	CuZn
Contact surface material	Au
Contact carrier material	PA

Connector

Insertion/withdrawal cycles	> 100
-----------------------------	---------

Header 1

Head design	Socket
Head cable outlet	straight

Flush-type connector - SACC-CI-M12FSY-8P SMD SH T



1411965

<https://www.phoenixcontact.com/us/products/1411965>

Head thread type	M12
Coding	Y - hybrid

Cable / line

Cable structure

Signal type/category	Universal CAT5 (IEC 11801:2002)
----------------------	---------------------------------

Environmental and real-life conditions

Ambient conditions

Degree of protection (when plugged in)	IP67 (correctly plugged in and locked)
Degree of protection	IP67 (correctly plugged in and locked)
Degree of protection	IP67, when plugged in
Ambient temperature (operation)	-25 °C ... 105 °C (Plug / socket)
	-55 °C ... 105 °C (without mechanical actuation)

Mounting

Mounting type	PCB mounting
---------------	--------------

Packaging specifications

Type of packaging	Tray
Delivery state	with assembly pad

Flush-type connector - SACC-CI-M12FSY-8P SMD SH T

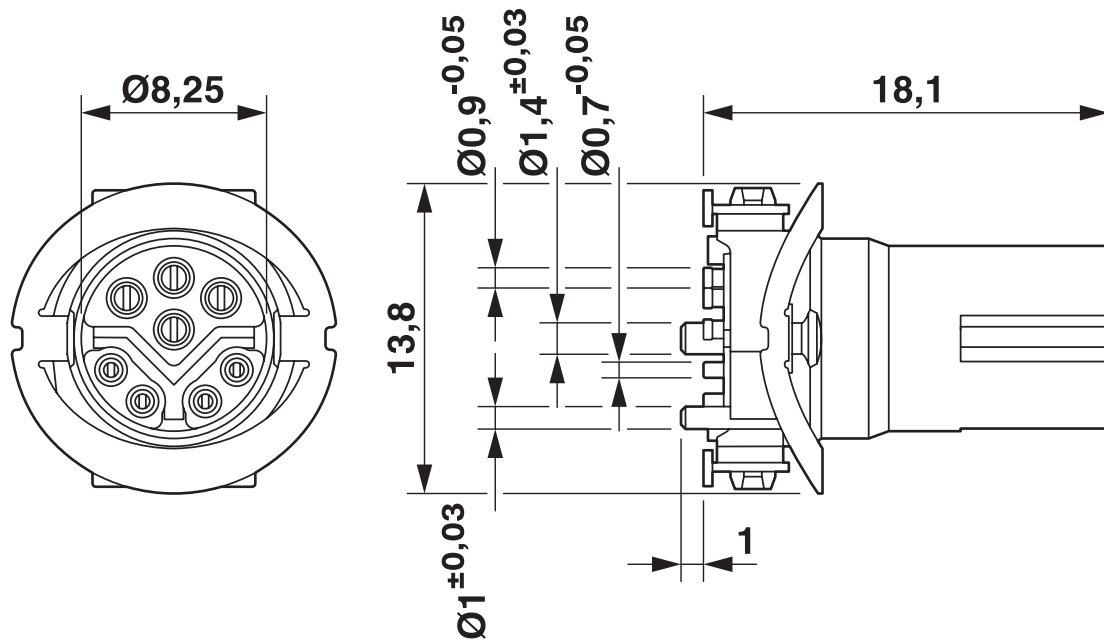


1411965

<https://www.phoenixcontact.com/us/products/1411965>

Drawings

Dimensional drawing



M12 female connector contact carrier

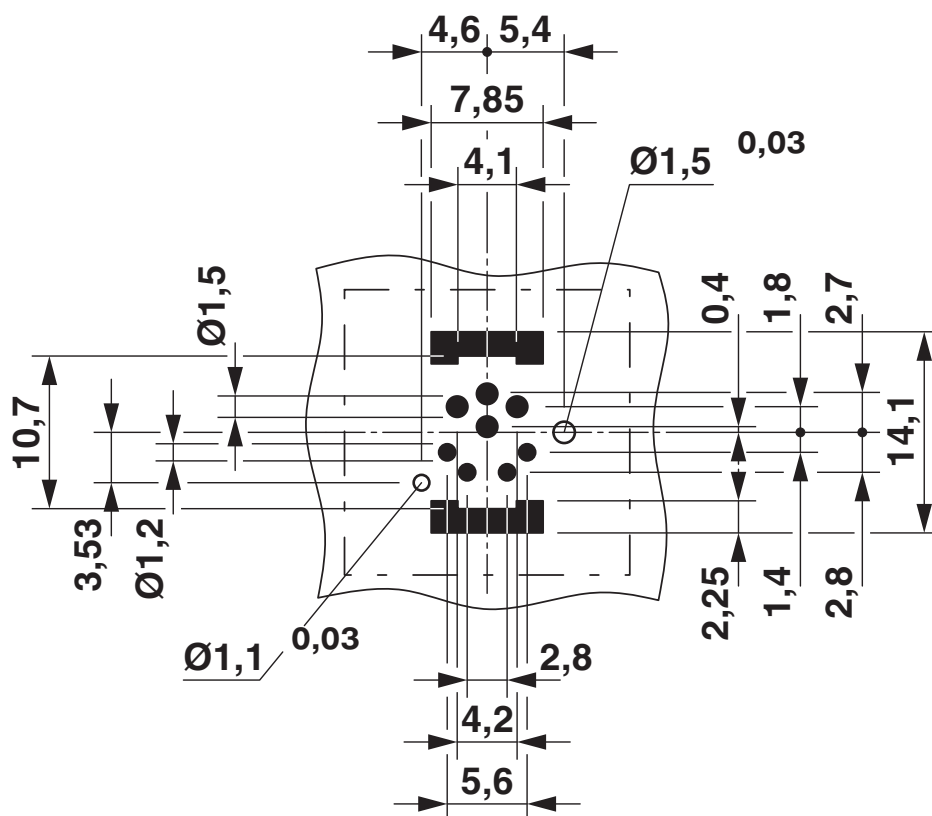
Flush-type connector - SACC-CI-M12FSY-8P SMD SH T



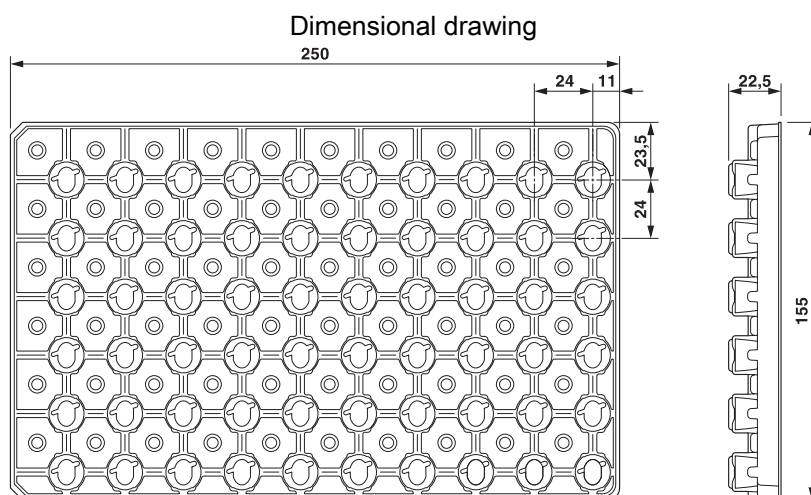
1411965

<https://www.phoenixcontact.com/us/products/1411965>

Drilling plan/solder pad geometry



Soldering pad geometry



SMD tray packaging

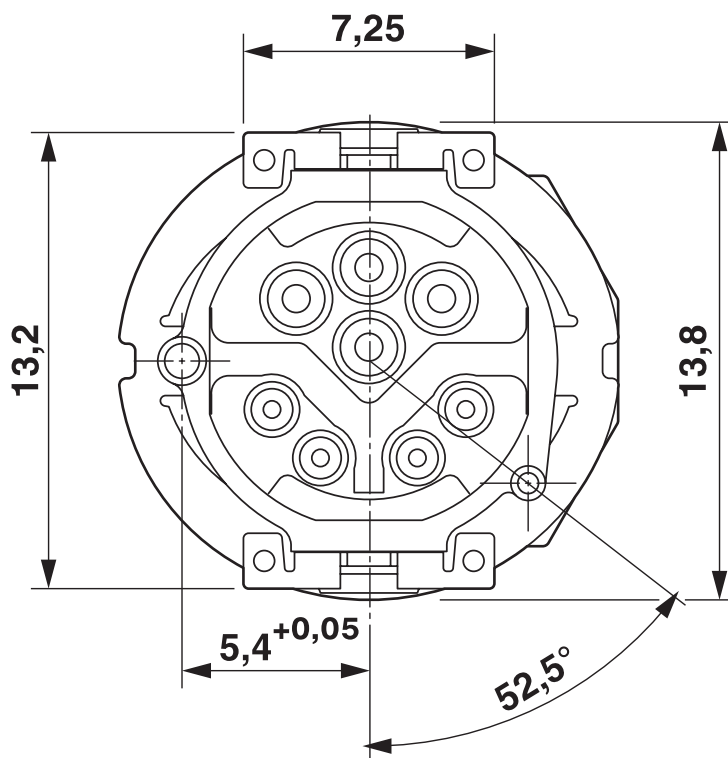
Flush-type connector - SACC-CI-M12FSY-8P SMD SH T



1411965

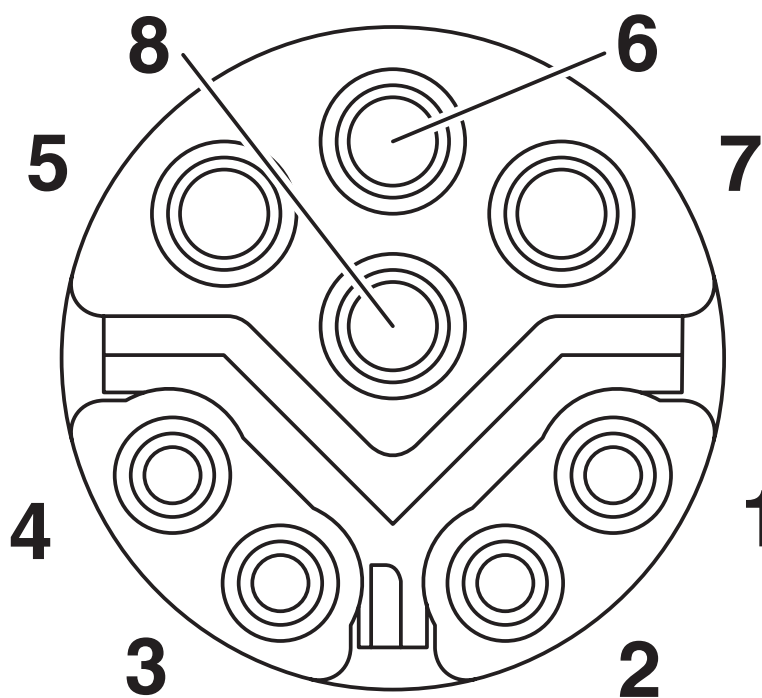
<https://www.phoenixcontact.com/us/products/1411965>

Dimensional drawing



View of solder side

Schematic diagram



Pin assignment M12 connector, 8-pos., view socket side

Flush-type connector - SACC-CI-M12FSY-8P SMD SH T



1411965

<https://www.phoenixcontact.com/us/products/1411965>

Approvals



cUL Recognized

Approval ID: E335024-20120308



UL Recognized

Approval ID: E335024-20120308



EAC

Approval ID: B.01687

cULus Recognized

Flush-type connector - SACC-CI-M12FSY-8P SMD SH T



1411965

<https://www.phoenixcontact.com/us/products/1411965>

Classifications

ECLASS

ECLASS-9.0	27440102
ECLASS-10.0.1	27440102
ECLASS-11.0	27440110

ETIM

ETIM 8.0	EC003568
----------	----------

UNSPSC

UNSPSC 21.0	39121400
-------------	----------

Flush-type connector - SACC-CI-M12FSY-8P SMD SH T



1411965

<https://www.phoenixcontact.com/us/products/1411965>

Environmental Product Compliance

REACH SVHC	Lead 7439-92-1
China RoHS	Environmentally Friendly Use Period = 50 years
	For information on hazardous substances, refer to the manufacturer's declaration available under "Downloads"

Flush-type connector - SACC-CI-M12FSY-8P SMD SH T



1411965

<https://www.phoenixcontact.com/us/products/1411965>

Accessories

Sample set

Sample set - SACC-CI-M12FSY-8P SMD SH-SP - 1418638

<https://www.phoenixcontact.com/us/products/1418638>



Sample set, Universal, 8-position, Socket, straight, M12, Y - hybrid, PCB mounting, SMD

Housing screw connection

Housing screw connection - SACC-BP-F-M12/M15-6-SMD - 1414021

<https://www.phoenixcontact.com/us/products/1414021>



Housing screw connection, Socket, M12, Rear mounting, M15 x 1

Flush-type connector - SACC-CI-M12FSY-8P SMD SH T



1411965

<https://www.phoenixcontact.com/us/products/1411965>

Housing screw connection

Housing screw connection - SACC-BP-F-M12/M15-6-SMD SCO - 1414023

<https://www.phoenixcontact.com/us/products/1414023>

Housing screw connection, Socket, M12-SPEEDCON, Rear mounting, M15 x 1



Housing screw connection

Housing screw connection - SACC-FP-F-M12/M14 SMD - 1412079

<https://www.phoenixcontact.com/us/products/1412079>

M12 female connector, front mounting SMD with M14 screw fastening



Flush-type connector - SACC-CI-M12FSY-8P SMD SH T



1411965

<https://www.phoenixcontact.com/us/products/1411965>

Housing screw connection

Housing screw connection - SACC-FP-F-M12/PRESS SMD - 1412081

<https://www.phoenixcontact.com/us/products/1412081>



Housing screw connection, socket, for the two-part M12 SMD connector, for press-in mounting.

Housing screw connection

Housing screw connection - SACC-BP-F-M12/SMD-0,9/1,6-9TIP - 1419569

<https://www.phoenixcontact.com/us/products/1419569>



M12 threaded sleeve with tolerance-compensating function, for straight, SMD-solderable M12 socket contact inserts. Suitable for 0.9 mm ... 1.6 mm thick front plates.

Flush-type connector - SACC-CI-M12FSY-8P SMD SH T



1411965

<https://www.phoenixcontact.com/us/products/1411965>

Housing screw connection

Housing screw connection - SACC-BP-F-M12/SMD-1,6/2,3-9TIP - 1419570

<https://www.phoenixcontact.com/us/products/1419570>



M12 threaded sleeve with tolerance-compensating function, for straight, SMD-solderable M12 socket contact inserts. Suitable for 1.6 mm ... 2.3 mm thick front plates.

Housing screw connection

Housing screw connection - SACC-BP-F-M12/SMD-2,3/3,0-9TIP - 1419571

<https://www.phoenixcontact.com/us/products/1419571>



M12 threaded sleeve with tolerance-compensating function, for straight, SMD-solderable M12 socket contact inserts. Suitable for 2.3 mm ... 3.0 mm thick front plates.

Flush-type connector - SACC-CI-M12FSY-8P SMD SH T



1411965

<https://www.phoenixcontact.com/us/products/1411965>

Housing screw connection

Housing screw connection - SACC-BP-F-FIX/NUT-BK-SMD - 1419568

<https://www.phoenixcontact.com/us/products/1419568>



Fixing sleeve for M12 housing screw connection with tolerance-compensating function, for SMD-solderable M12 socket contact inserts.

Housing screw connection

Housing screw connection - SACC-BP-F-FIX/NUT-CY-SMD - 1419565

<https://www.phoenixcontact.com/us/products/1419565>



Fixing sleeve for M12 housing screw connection with tolerance-compensating function, for SMD-solderable M12 socket contact inserts.

Flush-type connector - SACC-CI-M12FSY-8P SMD SH T



1411965

<https://www.phoenixcontact.com/us/products/1411965>

Housing screw connection

Housing screw connection - SACC-BP-F-FIX/NUT-GN-SMD - 1419566

<https://www.phoenixcontact.com/us/products/1419566>



Fixing sleeve for M12 housing screw connection with tolerance-compensating function, for SMD-solderable M12 socket contact inserts.

Housing screw connection

Housing screw connection - SACC-BP-F-FIX/NUT-VT-SMD - 1419567

<https://www.phoenixcontact.com/us/products/1419567>



Fixing sleeve for M12 housing screw connection with tolerance-compensating function, for SMD-solderable M12 socket contact inserts.

Phoenix Contact 2022 © - all rights reserved
<https://www.phoenixcontact.com>

Phoenix Contact USA
586 Fulling Mill Road
Middletown, PA 17057, United States
(+717) 944-1300
info@phoenixcon.com