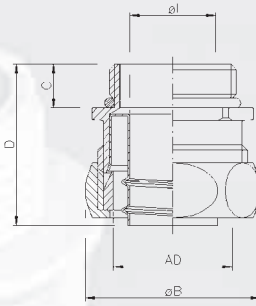


Metall-Sicherheitsverschraubung
gerade, Außengewinde
inkl. Innentülle, Dichtring und O-Ring

Metal connector, safety-type
straight, outer thread
incl. ferrule, sealing and O-ring



Inhalt

Portrait

ROHRflex
Wellschlauch

FLEXAquick
Anschluss-
technik

Metall
Schläuche

Metall
Schläuche
- dicht -

Kunststoff
Schläuche

Spezial
Schläuche

Anschluss-
technik

AD	OD	FLEXA No.		FLEXA No.											
		SPR-AS SPR-MS-NI SPR-VA		SPR-PA SPR-PU-AS SPR-PVC-AS											
ø	Metr. EN 60423	[IP 40]	mm	ø l mm	[IP 65]	ø l mm	ø B mm	C mm	D mm	SW1 mm	SW2 mm	kg/100	St. Pcs.		
10	M 10 x 1,0	5010.327.010	8 x 10	6,5	5010.328.010	7 x 10	6,0	19	10	31	15	17	1,50	50	
14	M 12 x 1,5	5010.327.012	11 x 14	9,0	5010.328.012	10 x 14	8,5	23	10	33	19	21	2,25	50	
17	M 16 x 1,5	5010.327.016	14 x 17	12,5	5010.328.016	13 x 17	11,5	27	10	33	23	25	3,00	50	
21	M 20 x 1,5	5010.327.020	18 x 21	16,0	5010.328.020	17 x 21	15,5	31	10	33	27	29	4,00	50	
27	M 25 x 1,5	5010.327.025	23 x 27	21,0	5010.328.025	22 x 27	20,5	39	11	41	34	36	7,60	25	
36	M 32 x 1,5	5010.327.032	31 x 36	27,5	5010.328.032	29 x 36	27,5	48	13	43	43	45	10,10	25	
45	M 40 x 1,5	5010.327.040	40 x 45	35,0	5010.328.040	38 x 45	35,0	57	13	43	52	54	13,00	20	
56	M 50 x 1,5	5010.327.050	51 x 56	45,0	5010.328.050	49 x 56	45,0	70	14	49	63	66	20,00	10	
56	M 63 x 1,5	5010.327.163	51 x 56	45,0	5010.328.163	49 x 56	45,0	75	14	49	70	70	25,00	10	
Kleine Verpackungseinheiten Small packing units															
10	M 10 x 1,0	5010.827.010	8 x 10	6,5	5010.828.010	7 x 10	6,0	19	10	31	15	17	1,50	10	
14	M 12 x 1,5	5010.827.012	11 x 14	9,0	5010.828.012	10 x 14	8,5	23	10	33	19	21	2,25	10	
17	M 16 x 1,5	5010.827.016	14 x 17	12,5	5010.828.016	13 x 17	11,5	27	10	33	23	25	3,00	10	
21	M 20 x 1,5	5010.827.020	18 x 21	16,0	5010.828.020	17 x 21	15,5	31	10	33	27	29	4,00	10	
27	M 25 x 1,5	5010.827.025	23 x 27	21,0	5010.828.025	22 x 27	20,5	39	11	41	34	36	7,60	10	
36	M 32 x 1,5	5010.827.032	31 x 36	27,5	5010.828.032	29 x 36	27,5	48	13	43	43	45	10,10	2	
45	M 40 x 1,5	5010.827.040	40 x 45	35,0	5010.828.040	38 x 45	35,0	57	13	43	52	54	13,00	2	
56	M 50 x 1,5	5010.827.050	51 x 56	45,0	5010.828.050	49 x 56	45,0	70	14	49	63	66	20,00	2	
56	M 63 x 1,5	5011.827.163	51 x 56	45,0	5011.828.163	49 x 56	45,0	75	14	49	70	70	25,00	2	
FLEXAgraff®-AS															
FLEXAgraff®-PU-AS															
		[IP 40]			[IP 65]										
10	M 10 x 1,0	5010.327.010	8 x 10	6,5	5010.328.010	7 x 10	6,0	19	10	31	15	17	1,50	50	
14	M 12 x 1,5	5010.339.012	12 x 14	9,0	5010.327.012	11 x 14	9,0	23	10	33	19	21	2,25	50	
17	M 16 x 1,5	5010.327.016	14 x 17	12,5	5010.328.016	13 x 17	11,5	27	10	33	23	25	3,00	50	
21	M 20 x 1,5	5010.327.020	18 x 21	16,5	5010.328.020	17 x 21	15,5	31	10	33	27	29	4,00	50	
27	M 25 x 1,5	5010.339.025	24 x 27	21,0	5010.340.025	23 x 27	20,5	39	11	41	34	36	7,60	25	
36	M 32 x 1,5	5010.327.032	31 x 36	27,5	5010.328.032	29 x 36	27,5	48	13	43	43	45	10,10	25	
45	M 40 x 1,5	5010.327.040	40 x 45	35,0	5010.328.040	38 x 45	35,0	57	13	43	52	54	13,00	20	
56	M 50 x 1,5	5010.327.050	51 x 56	45,0	5010.328.050	49 x 56	45,0	70	14	49	63	66	20,00	10	
56	M 63 x 1,5	5010.327.163	51 x 56	45,0	5010.328.163	49 x 56	45,0	75	14	49	70	70	25,00	10	