

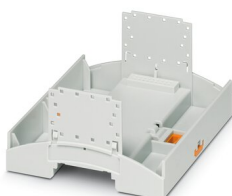
Mounting base housing - BC 107,6 UT HBUS KMGY



2202951

<https://www.phoenixcontact.com/pc/products/2202951>

Please be informed that the data shown in this PDF document is generated from our Online Catalog. Please find the complete data in the user documentation. Our General Terms of Use for Downloads are valid.



DIN rail housing for use in distribution boards in accordance with DIN 43880, Lower housing part with base latch, width: 107.6 mm, height: 89.7 mm, depth: 48.9 mm, color: light grey (7035), cross connection: DIN rail connector (optional), number of positions cross connector: 16

Your advantages

- Coordinated housing and connection system for faster device development
- Individual online configuration for diverse applications in building automation
- Variety of connection technology
- Can be mounted on the DIN rail or the wall
- With DIN-rail-mountable bus connector and power connector system as an option
- Tool-free mounting
- Available in overall widths from one to nine HP (17.8 mm ... 161.6 mm)
- Compliant with DIN EN 43880

Commercial Data

Item number	2202951
Packing unit	10 pc
Minimum order quantity	10 pc
Product Key	ACHBAA
GTIN	4055626282114
Weight per Piece (including packing)	69.38 g
Weight per Piece (excluding packing)	46.404 g
Customs tariff number	85389099
Country of origin	DE

Mounting base housing - BC 107,6 UT HBUS KMGY



2202951

<https://www.phoenixcontact.com/pc/products/2202951>

Technical Data

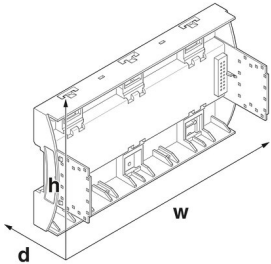
Notes

Assembly instruction:	Refer to the data sheet for the range in the download area.
-----------------------	---

Product properties

Product type	Lower part of the housing
Type	Lower housing part with base latch
Housing type	DIN rail housing for use in distribution boards in accordance with DIN 43880
Ventilation openings present	no
Housing series	BC

Dimensions

Dimensional drawing	
Width	107.6 mm
Height	89.7 mm
Depth	48.9 mm
Horizontal pitch	6 Div.

PCB design

PCB thickness	1.4 mm ... 1.8 mm
---------------	-------------------

Material specifications

Color	light grey (7035)
Flammability rating according to UL 94	V0
CTI according to IEC 60112	<400
Surface characteristics	untreated
Housing material	Polycarbonate

Environmental and real-life conditions

Power dissipation single housing for 20 °C

Ambient temperature	20 °C
Reduction factor	1
Mounting position	vertical
Power dissipation	13.08 W

Mounting base housing - BC 107,6 UT HBUS KMGY



2202951

<https://www.phoenixcontact.com/pc/products/2202951>

Power dissipation single housing for 30 °C

Ambient temperature	30 °C
Reduction factor	0.84
Mounting position	vertical
Power dissipation	11 W

Power dissipation single housing for 40 °C

Ambient temperature	40 °C
Reduction factor	0.72
Mounting position	vertical
Power dissipation	9.4 W

Power dissipation single housing for 50 °C

Ambient temperature	50 °C
Reduction factor	0.6
Mounting position	vertical
Power dissipation	7.85 W

Power dissipation single housing for 60 °C

Ambient temperature	60 °C
Reduction factor	0.48
Mounting position	vertical
Power dissipation	6.3 W

Power dissipation single housing for 70 °C

Ambient temperature	70 °C
Reduction factor	0.38
Mounting position	vertical
Power dissipation	5 W

Vibration test

Specification	IEC 60068-2-6:2007-12
Frequency	10 - 150 - 10 Hz
Sweep speed	1 octave/min
Amplitude	0.15 mm (10 Hz ... 58.1 Hz)
Acceleration	2g (58.1 Hz ... 150 Hz)
Test duration per axis	2.5 h
Test directions	X-, Y- and Z-axis

Glow-wire test

Specification	IEC 60695-2-11:2014-02
Temperature	850 °C
Time of exposure	30 s

Mechanical strength / tumbling barrel

Specification	IEC 60068-2-31:2008-05
Height of fall	50 cm

Mounting base housing - BC 107,6 UT HBUS KMGY



2202951

<https://www.phoenixcontact.com/pc/products/2202951>

Frequency	50
-----------	----

Shocks

Specification	IEC 60068-2-27:2008-02
Pulse shape	Half-sine
Acceleration	15g
Shock duration	11 ms
Number of shocks per direction	3
Test directions	X-, Y- and Z-axis (pos. and neg.)

Degree of protection (IP code)

Specification	IEC 60529:1989-11 + AMD 1:1999-11 + AMD 2:2013-08
---------------	---

Ambient conditions

Max. IP code to attain	IP20
Ambient temperature (operation)	-40 °C ... 105 °C (depending on power dissipation)
Ambient temperature (storage/transport)	-40 °C ... 70 °C
Ambient temperature (assembly)	-5 °C ... 100 °C
Relative humidity (storage/transport)	95 %

PCB data

Number of PCB holders	9
Type of PCB mount	Latching
Thickness of the PCB	1.4 mm ... 1.8 mm

Mounting

Mounting type	DIN rail mounting/wall mounting
Mounting position	Vertical (horizontal DIN rail)

Packaging specifications

Type of packaging	packed in cardboard
Outer packaging type	Carton

Mounting base housing - BC 107,6 UT HBUS KMGY

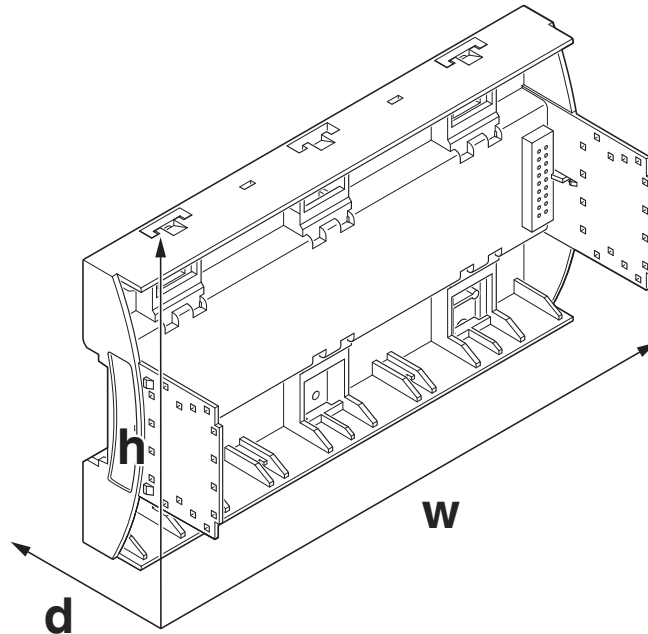
2202951

<https://www.phoenixcontact.com/pc/products/2202951>



Drawings

Dimensional drawing



Schematic figure for illustrating the item dimensions. The figure is not of the desired product. For further details, refer to the product drawings in the "Downloads" tab.

Mounting base housing - BC 107,6 UT HBUS KMGY



2202951

<https://www.phoenixcontact.com/pc/products/2202951>

Approvals



EAC

Approval ID: B.01687



UL Recognized

Approval ID: FILE E 240868

Mounting base housing - BC 107,6 UT HBUS KMGY



2202951

<https://www.phoenixcontact.com/pc/products/2202951>

Classifications

ECLASS

ECLASS-9.0	27182702
ECLASS-10.0.1	27182702
ECLASS-11.0	27182702

ETIM

ETIM 8.0	EC001031
----------	----------

UNSPSC

UNSPSC 21.0	31261500
-------------	----------

Environmental Product Compliance

China RoHS	Environmentally friendly use period: unlimited = EFUP-e
	No hazardous substances above threshold values

Mounting base housing - BC 107,6 UT HBUS KMGY



2202951

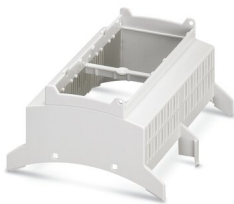
<https://www.phoenixcontact.com/pc/products/2202951>

Mandatory Accessories

Upper part of housing

Upper part of housing - BC 107,6 OT U11 KMGY - 2896076

<https://www.phoenixcontact.com/pc/products/2896076>

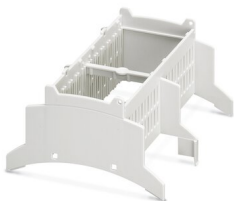


DIN rail housing for use in distribution boards in accordance with DIN 43880, Upper housing part (U11) with vents, Installation depth connection technology: 11.1 mm, width: 107.6 mm, height: 89.7 mm, depth: 54.85 mm, color: light grey (7035)

Upper part of housing

Upper part of housing - BC 107,6 OT U22 KMGY - 2896089

<https://www.phoenixcontact.com/pc/products/2896089>



DIN rail housing for use in distribution boards in accordance with DIN 43880, Upper housing part (U22) with vents, Installation depth connection technology: 22.35 mm, width: 107.6 mm, height: 89.7 mm, depth: 54.85 mm, color: light grey (7035)

Mounting base housing - BC 107,6 UT HBUS KMGY



2202951

<https://www.phoenixcontact.com/pc/products/2202951>

Upper part of housing

Upper part of housing - BC 107,6 OT U11 BK - 2200721

<https://www.phoenixcontact.com/pc/products/2200721>



DIN rail housing for use in distribution boards in accordance with DIN 43880, Upper housing part (U11) with vents, Installation depth connection technology: 11.1 mm, width: 107.6 mm, height: 89.7 mm, depth: 54.85 mm, color: black (9005)

Upper part of housing

Upper part of housing - BC 107,6 OT 2000 KMGY - 1050443

<https://www.phoenixcontact.com/pc/products/1050443>



DIN rail housing for use in distribution boards in accordance with DIN 43880, modular upper housing part, width: 107.6 mm, height: 89.7 mm, depth: 54.85 mm, color: light grey (7035)

Mounting base housing - BC 107,6 UT HBUS KMGY



2202951

<https://www.phoenixcontact.com/pc/products/2202951>

Upper part of housing

Upper part of housing - BC 107,6 OT U11 RD3000 - 2203809

<https://www.phoenixcontact.com/pc/products/2203809>

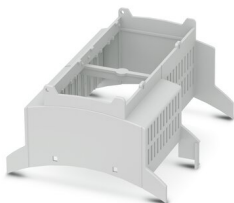


DIN rail housing for use in distribution boards in accordance with DIN 43880, Upper housing part (U11) with vents, Installation depth connection technology: 11.1 mm, width: 107.6 mm, height: 89.7 mm, depth: 54.85 mm, color: red (3000)

Upper part of housing

Upper part of housing - BC 107,6 OT 1112 KMGY - 1086268

<https://www.phoenixcontact.com/pc/products/1086268>



DIN rail housing for use in distribution boards in accordance with DIN 43880, modular upper housing part, width: 107.6 mm, height: 89.7 mm, depth: 54.85 mm, color: light grey (7035)

Mounting base housing - BC 107,6 UT HBUS KMGY



2202951

<https://www.phoenixcontact.com/pc/products/2202951>

Upper part of housing

Upper part of housing - BC 107,6 OT U11 BK VPE80 - 1006943

<https://www.phoenixcontact.com/pc/products/1006943>



DIN rail housing for use in distribution boards in accordance with DIN 43880, Upper housing part (U11) with vents, Installation depth connection technology: 11.1 mm, width: 107.6 mm, height: 89.7 mm, depth: 54.85 mm, color: black (9005)

Upper part of housing

Upper part of housing - BC 107,6 OT 0C0C0C0C KMGY - 1046365

<https://www.phoenixcontact.com/pc/products/1046365>



DIN rail housing for use in distribution boards in accordance with DIN 43880, modular upper housing part, width: 107.6 mm, height: 89.7 mm, depth: 54.85 mm, color: light grey (7035)

Mounting base housing - BC 107,6 UT HBUS KMGY



2202951

<https://www.phoenixcontact.com/pc/products/2202951>

Upper part of housing

Upper part of housing - BC 107,6 OT 0C0C0C0C BK - 1066143

<https://www.phoenixcontact.com/pc/products/1066143>

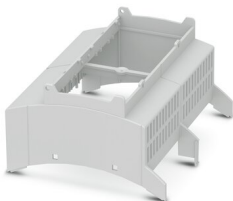


DIN rail housing for use in distribution boards in accordance with DIN 43880, modular upper housing part, width: 107.6 mm, height: 89.7 mm, depth: 54.85 mm, color: black (9005)

Upper part of housing

Upper part of housing - BC 107,6 OT 0101 KMGY MOQ80 - 1065104

<https://www.phoenixcontact.com/pc/products/1065104>



DIN rail housing for use in distribution boards in accordance with DIN 43880, modular upper housing part, width: 107.6 mm, height: 89.7 mm, depth: 54.85 mm, color: light grey (7035)

Mounting base housing - BC 107,6 UT HBUS KMGY



2202951

<https://www.phoenixcontact.com/pc/products/2202951>

Upper part of housing

Upper part of housing - BC 107,6 OT U22 BK - 2203763

<https://www.phoenixcontact.com/pc/products/2203763>

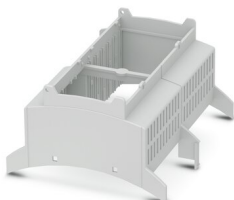


DIN rail housing for use in distribution boards in accordance with DIN 43880, Upper housing part (U22) with vents, Installation depth connection technology: 22.35 mm, width: 107.6 mm, height: 89.7 mm, depth: 54.85 mm, color: black (9005)

Upper part of housing

Upper part of housing - BC 107,6 OT 1121 KMGY - 2203260

<https://www.phoenixcontact.com/pc/products/2203260>



DIN rail housing for use in distribution boards in accordance with DIN 43880, modular upper housing part, width: 107.6 mm, height: 89.7 mm, depth: 54.85 mm, color: light grey (7035)

Mounting base housing - BC 107,6 UT HBUS KMGY



2202951

<https://www.phoenixcontact.com/pc/products/2202951>

Upper part of housing

Upper part of housing - BC 107,6 OT 000C0C KMGY VPE80 - 1025418

<https://www.phoenixcontact.com/pc/products/1025418>

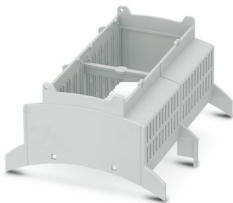


DIN rail housing for use in distribution boards in accordance with DIN 43880, modular upper housing part, width: 107.6 mm, height: 89.7 mm, depth: 54.85 mm, color: light grey (7035)

Upper part of housing

Upper part of housing - BC 107,6 OT 2121 KMGY - 1038850

<https://www.phoenixcontact.com/pc/products/1038850>



DIN rail housing for use in distribution boards in accordance with DIN 43880, modular upper housing part, width: 107.6 mm, height: 89.7 mm, depth: 54.85 mm, color: light grey (7035)

Mounting base housing - BC 107,6 UT HBUS KMGY

2202951

<https://www.phoenixcontact.com/pc/products/2202951>

Upper part of housing

Upper part of housing - BC 107,6 OT 0121 KMGY - 2202301

<https://www.phoenixcontact.com/pc/products/2202301>

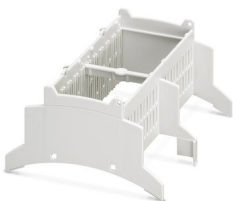


DIN rail housing for use in distribution boards in accordance with DIN 43880, modular upper housing part, width: 107.6 mm, height: 89.7 mm, depth: 54.85 mm, color: light grey (7035)

Upper part of housing

Upper part of housing - BC 107,6 OT U22 GY 7045 - 2202269

<https://www.phoenixcontact.com/pc/products/2202269>



DIN rail housing for use in distribution boards in accordance with DIN 43880, Upper housing part (U22) with vents, Installation depth connection technology: 22.35 mm, width: 107.6 mm, height: 89.7 mm, depth: 54.85 mm, color: gray (7045)

Mounting base housing - BC 107,6 UT HBUS KMGY



2202951

<https://www.phoenixcontact.com/pc/products/2202951>

Upper part of housing

Upper part of housing - BC 107,6 OT 1210 BK - 1163398

<https://www.phoenixcontact.com/pc/products/1163398>

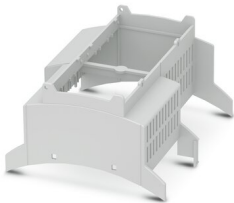


DIN rail housing for use in distribution boards in accordance with DIN 43880, modular upper housing part, width: 107.6 mm, height: 89.7 mm, depth: 54.85 mm, color: black (9005)

Upper part of housing

Upper part of housing - BC 107,6 OT 1102 KMGY VPE80 - 1080948

<https://www.phoenixcontact.com/pc/products/1080948>



DIN rail housing for use in distribution boards in accordance with DIN 43880, modular upper housing part, width: 107.6 mm, height: 89.7 mm, depth: 54.85 mm, color: light grey (7035)

Mounting base housing - BC 107,6 UT HBUS KMGY



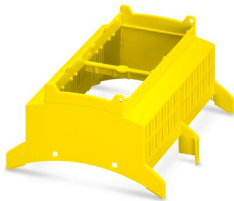
2202951

<https://www.phoenixcontact.com/pc/products/2202951>

Upper part of housing

Upper part of housing - BC 107,6 OT U11 YE - 1163766

<https://www.phoenixcontact.com/pc/products/1163766>



DIN rail housing for use in distribution boards in accordance with DIN 43880, Upper housing part (U11) with vents, Installation depth connection technology: 11.1 mm, width: 107.6 mm, height: 89.7 mm, depth: 54.85 mm, color: yellow (1018)

Accessories

Base latch

Base latch - FUSSRIEGEL 14,4 L30 SPERR OG - 2896998

<https://www.phoenixcontact.com/pc/products/2896998>



DIN rail housing for use in distribution boards in accordance with DIN 43880, Base latch, width: 14.4 mm, height: 29.8 mm, depth: 5.9 mm, color: orange (2003)

Mounting base housing - BC 107,6 UT HBUS KMGY



2202951

<https://www.phoenixcontact.com/pc/products/2202951>

DIN rail bus connectors

DIN rail bus connectors - HBUS 107,6-16P-1S BK - 2896306

<https://www.phoenixcontact.com/pc/products/2896306>



DIN rail connector, color: black, nominal current: 3 A (Total current of 25 A max.), rated voltage (III/2): 30 V, number of positions: 16, pitch: 2.54 mm, mounting: DIN rail mounting, locking: without

Pin strip

Pin strip - PSTD 0,65X0,65/9-2,54 - 2200700

<https://www.phoenixcontact.com/pc/products/2200700>



Pin strip, color: black, type of contact: Male connector, number of potentials: 18, number of rows: 2, number of positions: 18, number of connections: 18, product range: PSTD 0,65X0,65/...-V, pitch: 2.54 mm, mounting: THR soldering, pin layout: Linear pinning, solder pin [P]: 2.5 mm, locking: without, type of packaging: packed in cardboard

Mounting base housing - BC 107,6 UT HBUS KMGY



2202951

<https://www.phoenixcontact.com/pc/products/2202951>

DIN rail bus connectors

DIN rail bus connectors - HBUS8 107,6-8P-1S BK - 1252173

<https://www.phoenixcontact.com/pc/products/1252173>



DIN rail connector, color: black, nominal current: 3 A (per contact), rated voltage (III/2): 100 V, number of positions: 8, pitch: 2.54 mm, mounting: DIN rail mounting, locking: without

Phoenix Contact 2023 © - all rights reserved

<https://www.phoenixcontact.com>

PHOENIX CONTACT GmbH & Co. KG

Flachsmarktstraße 8

D-32825 Blomberg

+49 (0) 5235-3 00

info@phoenixcontact.com