

Flush-type connector - SACC-CIP-M12MST-4P SMD R32



1412003

<https://www.phoenixcontact.com/au/products/1412003>

Please be informed that the data shown in this PDF document is generated from our Online Catalog. Please find the complete data in the user documentation. Our General Terms of Use for Downloads are valid.



Flush-type connector, Power, 4-position, Plug, straight, M12, T power, PCB mounting, SMD

Your advantages

- For compact devices: transmit high power in a confined space
- Reduced mounting costs thanks to two-piece device connector
- Packaging available for automated pick and place assembly
- All common pin assignments and codings available
- Easy device integration thanks to mechanical port screw connections with threaded attachment, press-in contour or direct integration in the front plate
- Additional gasket for the device when not plugged in

Flush-type connector - SACC-CIP-M12MST-4P SMD R32



1412003

<https://www.phoenixcontact.com/au/products/1412003>

Commercial Data

Item number	1412003
Packing unit	100 pc
Minimum order quantity	100 pc
Note	Made to Order (non-returnable)
Sales Key	ABQEAC
Product Key	ABQEAC
GTIN	4046356992343
Weight per Piece (including packing)	7.37 g
Weight per Piece (excluding packing)	7.37 g
Customs tariff number	85366990
Country of origin	DE

Flush-type connector - SACC-CIP-M12MST-4P SMD R32



1412003

<https://www.phoenixcontact.com/au/products/1412003>

Technical Data

Notes

Notes on operation	The electrical and mechanical data specified assume that the connector pair is correctly locked and mounted. If the connector is unlocked and if there is a danger of contamination, the connector must be sealed using a protective cap > IP54. Influences arising from litz wires, cables or PCB assembly must also be taken into consideration.
--------------------	--

Product properties

Product type	Contact insert
Number of positions	4
Coding	T power

Insulation characteristics

Overvoltage category	III
Degree of pollution	3

Electrical properties

Rated voltage in acc. with IEC 61076-2-101	630 V
Rated surge voltage	1.5 kV
Contact resistance	$\leq 3 \text{ m}\Omega$
Insulation resistance	$\geq 100 \text{ M}\Omega$
Nominal voltage U_N	63 V
Nominal current I_N	12 A

Interfaces

Signal type/category	Power
----------------------	-------

Material specifications

Flammability rating according to UL 94	V0
Sealing material	FKM
Contact material	CuZn
Contact surface material	Au
Contact carrier material	PA

Connector

Insertion/withdrawal cycles	> 100
-----------------------------	-------

Header 1

Head design	Plug
Head cable outlet	straight
Head thread type	M12
Coding	T power

Flush-type connector - SACC-CIP-M12MST-4P SMD R32



1412003

<https://www.phoenixcontact.com/au/products/1412003>

Cable / line

Cable structure

Signal type/category	Power
----------------------	-------

Environmental and real-life conditions

Ambient conditions

Degree of protection (when plugged in)	IP67 (correctly plugged in and locked)
Degree of protection	IP67, when plugged in
Ambient temperature (operation)	-25 °C ... 105 °C (Plug / socket)
	-40 °C ... 105 °C (without mechanical actuation)

Standards and regulations

M12

Standards/specifications	IEC 61076-2-111
--------------------------	-----------------

Mounting

Mounting type	PCB mounting
---------------	--------------

Packaging specifications

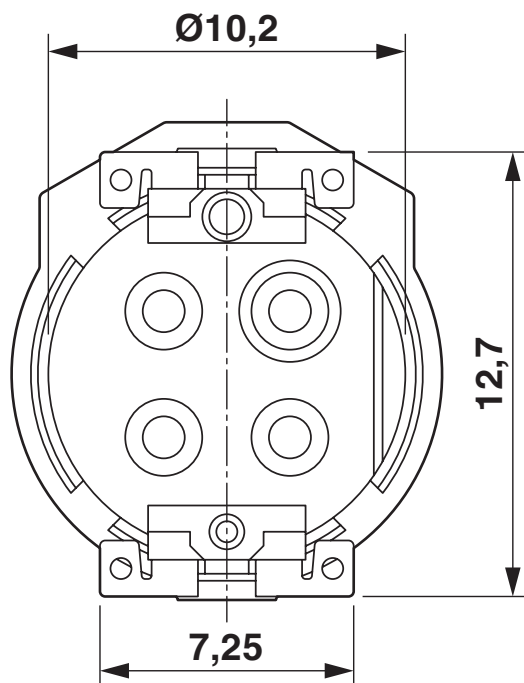
Type of packaging	Belt
Delivery state	with assembly pad

Flush-type connector - SACC-CIP-M12MST-4P SMD R32

1412003

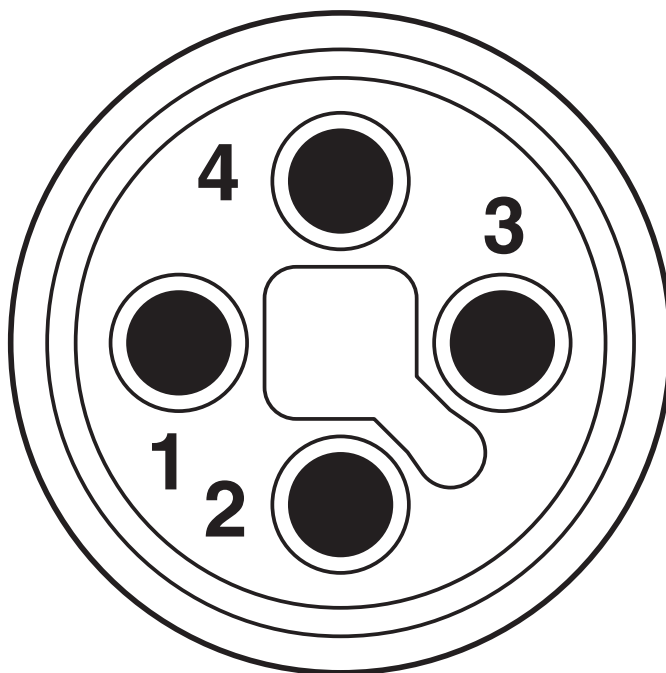
<https://www.phoenixcontact.com/au/products/1412003>

Dimensional drawing



View of solder side

Schematic diagram



Connector pin assignment of M12 plug, 4-pos., T-coded, view of pin side

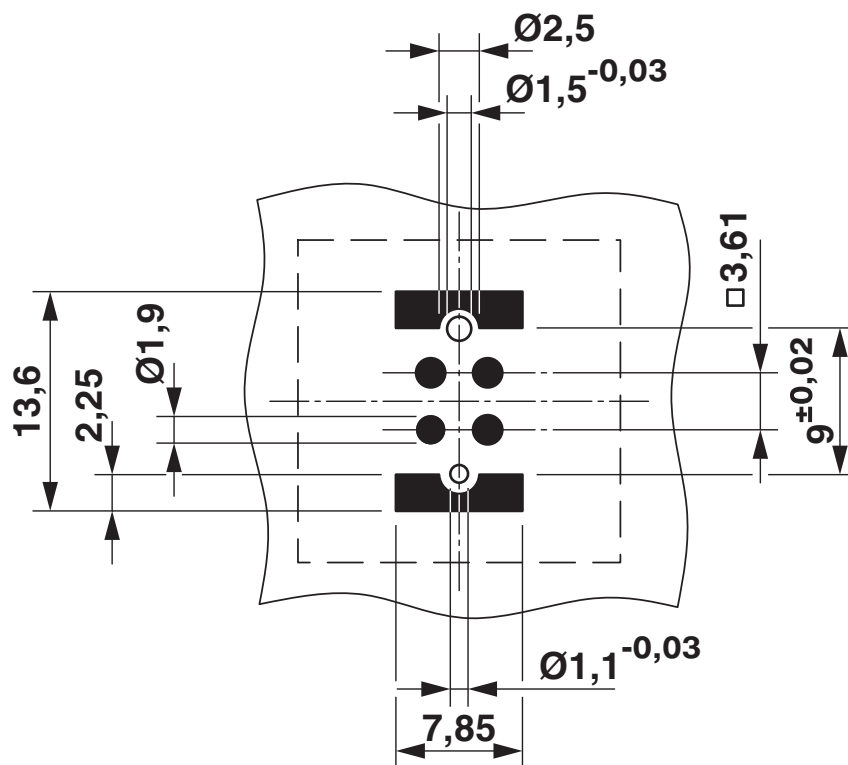
Flush-type connector - SACC-CIP-M12MST-4P SMD R32



1412003

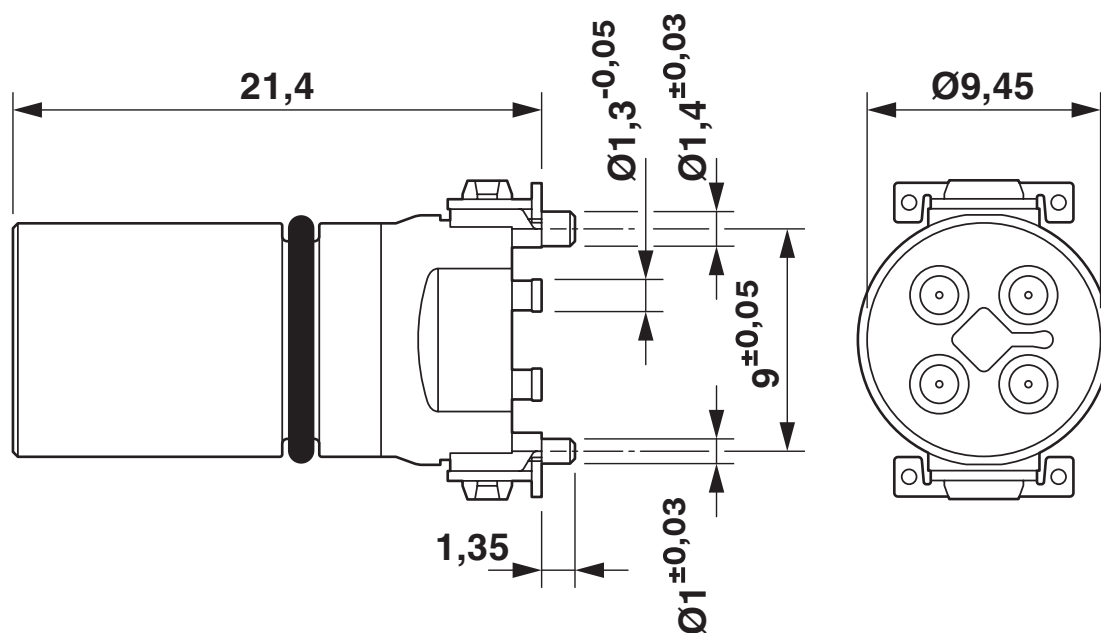
<https://www.phoenixcontact.com/au/products/1412003>

Drilling plan/solder pad geometry



Soldering pad geometry

Dimensional drawing



M12 male connector contact carrier


Flush-type connector - SACC-CIP-M12MST-4P SMD R32





1412003

<https://www.phoenixcontact.com/au/products/1412003>

Approvals

 cUL Recognized Approval ID: E468743-20190917				
	Nominal Voltage U_N	Nominal Current I_N	Cross Section AWG	Cross Section mm^2
	63 V	8 A	-	-

 UL Recognized Approval ID: E468743-20190917				
	Nominal Voltage U_N	Nominal Current I_N	Cross Section AWG	Cross Section mm^2
	63 V	10 A	-	-

 EAC Approval ID: B.01687				
--	--	--	--	--

cULus Recognized				
-------------------------	--	--	--	--

Flush-type connector - SACC-CIP-M12MST-4P SMD R32



1412003

<https://www.phoenixcontact.com/au/products/1412003>

Classifications

ECLASS

ECLASS-9.0	27440103
ECLASS-10.0.1	27440110
ECLASS-11.0	27440102

ETIM

ETIM 8.0	EC002635
----------	----------

UNSPSC

UNSPSC 21.0	39121400
-------------	----------

Flush-type connector - SACC-CIP-M12MST-4P SMD R32



1412003

<https://www.phoenixcontact.com/au/products/1412003>

Environmental Product Compliance

REACH SVHC	Lead 7439-92-1
China RoHS	Environmentally Friendly Use Period = 50 years
	For information on hazardous substances, refer to the manufacturer's declaration available under "Downloads"

Flush-type connector - SACC-CIP-M12MST-4P SMD R32



1412003

<https://www.phoenixcontact.com/au/products/1412003>

Accessories

Housing screw connection

Housing screw connection - SACC-BP-M-M12/M15-6-SMD - 1414000

<https://www.phoenixcontact.com/au/products/1414000>

Housing screw connection, Plug, M12, Rear mounting, M15 x 1



Housing screw connection

Housing screw connection - SACC-BP-M-M12/M15-6-SMD SCO - 1414002

<https://www.phoenixcontact.com/au/products/1414002>

Housing screw connection, Plug, M12-SPEEDCON, Rear mounting, M15 x 1



Flush-type connector - SACC-CIP-M12MST-4P SMD R32



1412003

<https://www.phoenixcontact.com/au/products/1412003>

Housing screw connection

Housing screw connection - SACC-FP-M-M12/M14 SMD - 1412078

<https://www.phoenixcontact.com/au/products/1412078>



M12 pin, front mounting SMD with M14 screw fastening

Housing screw connection

Housing screw connection - SACC-FP-M-M12/PRESS SMD - 1412080

<https://www.phoenixcontact.com/au/products/1412080>



Housing screw connection, pin, for the two-part M12 SMD connector, for press-in mounting.

Flush-type connector - SACC-CIP-M12MST-4P SMD R32



1412003

<https://www.phoenixcontact.com/au/products/1412003>

Housing screw connection

Housing screw connection - SACC-BP-M-M12-SMD PP - 1107993

<https://www.phoenixcontact.com/au/products/1107993>

Housing screw connection, Plug, M12-Push-Pull, Rear mounting, M15 x 1, SMD



Housing screw connection

Housing screw connection - SACC-FP-M-M12-SMD PP - 1107999

<https://www.phoenixcontact.com/au/products/1107999>

Housing screw connection, Plug, M12-Push-Pull, Front mounting, M14 x 1, SMD



Phoenix Contact 2022 © - all rights reserved
<https://www.phoenixcontact.com>

PHOENIX CONTACT PTY Ltd
Unit 7, 2-8 South Street
Rydalmere NSW 2116
1300 786 411
customerservice@phoenixcontact.com.au