

EPIC® H-A 10 TSH

These connectors are attractive because of their compact housing.

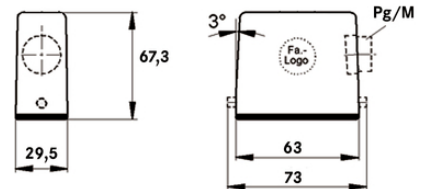
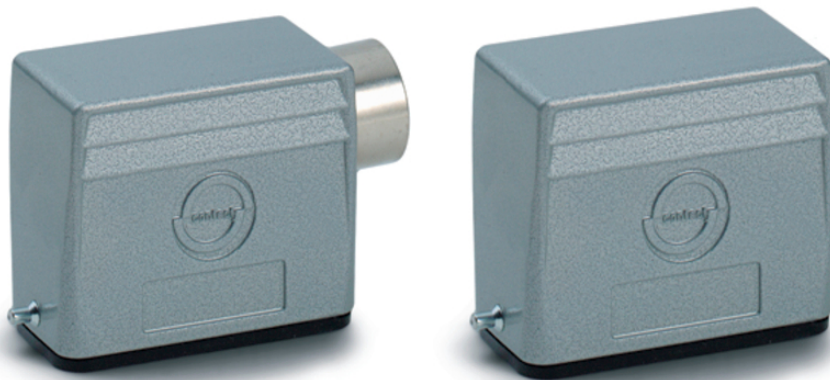
The high metal hood has a side cable entry and is suitable for use in machine and device manufacturing.

Info

Non-slip ridges for comfortable disconnecting

More interior space for wiring

Protection rating UL50E tested



Mechanical and plant engineering



Mechanical resistance



Robust



Waterproof

Benefits

Small and space-saving for narrow available space

Application range

Machine and equipment manufacturing

Control engineering

Electronic laboratory

Product features

Hood, high version

Bolts for single lever

Side cable entry

Last Update (03.09.2020)

©2020 Lapp Group - Technical changes reserved

Product Management www.lappkabel.de

You can find the current technical data in the corresponding data sheet.

PN 0456 / 02_03.16

EPIC® H-A 10 TSH

Versions with / without neck

Technical Data

Classification ETIM 5:	ETIM 5.0 Class-ID: EC000437 ETIM 5.0 Class-Description: Housing for industrial connectors
Classification ETIM 6:	ETIM 6.0 Class-ID: EC000437 ETIM 6.0 Class-Description: Housing for industrial connectors
Material:	Housing: aluminium alloy, grey Lever: zinc-plated steel Sealing: NBR
Protection rating:	IP 65 (latched) NEMA 250, UL50E: 12, 4 (latched)
VDE-tested:	Certified production control: VDE-REG. no.: B437 UL-tested: UL File Number: E75770
Temperature range:	-40°C to +100°C, short-term up to +125°C

Note

Photographs and graphics are not to scale and do not represent detailed images of the respective products.
Prices are net prices without VAT and surcharges. Sale to business customers only.

EPIC® H-A 10 TSH

Article number	Article description	M	PG	Neck	Pieces / PU
H-A housing: hood (side cable entry, bolts for single lever, high version)					
70462200	H-A 10 TSH 16	-	16	yes	5
70462400	H-A 10 TSH 21	-	21	yes	5
79462200	H-A 10 TSH M20	20	-	-	5
79462400	H-A 10 TSH M25	25	-	-	5

Last Update (03.09.2020)

©2020 Lapp Group - Technical changes reserved

Product Management www.lappkabel.de

You can find the current technical data in the corresponding data sheet.

PN 0456 / 02_03.16